

Instructions

EN INSTRUCTIONS

CE



2026_03_10-12:56

WARNINGS

- This equipment is for professional use only.
- Read the instruction manual and its warnings carefully before starting to operate the grease valve to avoid possible serious damage to persons or other equipment
- Keep all warnings and instructions for future reference.
- Do not modify the equipment. The product's design ensures that the parts necessary to achieve the safety level cannot be unintentionally disassembled.
- Use the equipment only for its purpose.
- Install and use the equipment in accordance with all local and national regulations including health, safety and environmental laws and regulations.
- Do not exceed the maximum outlet pressure.
- Use only original Parts.
- Any unauthorized modification of the equipment, misuse, improper maintenance, or removal of identification labels may void the warranty.
- To prevent accidents, when the equipment is not in use, make sure it is disconnected from the air supply line.
- Regularly check the system components. Replace broken, damaged, or worn parts
- Ensure that operators using this equipment are trained on the operation, the product, and its limitations.
- Use safety equipment as required.

DESCRIPTION

- Durable steel and aluminum grease gun for high-pressure systems (500 bar).
- Pulling the trigger releases a steady flow of grease.
- Use the gun with a swivel joint to prevent the high-pressure hose from twisting and to make accessing the grease point easier from any position.
- Some models include the triple swivel joint.

CONFIGURATION

PART NUMBER	14611	14617
Compatible Fluids	Grease	Grease
Maximum free flow delivery	1 kg/min (2,2 lb./min)	1 kg/min (2,2 lb./min)
Maximum outlet pressure	500 bar (7250 psi)	500 bar (7250 psi)
Operating temperature range	-10 ~ 70 °C (14-160 °F)	-10 ~ 70 °C (14-160 °F)
Inlet size	1/4"	1/4"
Fluid inlet	1/4" BSP (F)	1/4" BSP (F)
Fluid outlet	1/8" BSP (F)	1/8" BSP (F)
Meter	No meter	No meter
Wetted materials	Zinc plated steel, Steel	Zinc plated steel, Steel
Approximate Weight	0,76 kg (1,67 lb.)	1,21 kg (2,66 lb)
Outlet type	Rigid tube, grease connector	Z-swivel, reinforced hose tube, grease connector

2026_03_10-12:56

INSTALLATION

- **Thread sealant:** Apply joint sealant between the gun and the hose.
- **High-pressure swivel joint:** Apply sealant to the thread connecting the gun and the swivel joint.

OPERATION

- **Dispensing:** Connect the gun's hydraulic nozzle to the grease fitting and press the trigger.
- **Trigger:** The supply stops when the trigger is released.

MAINTENANCE

a. Control Valve:

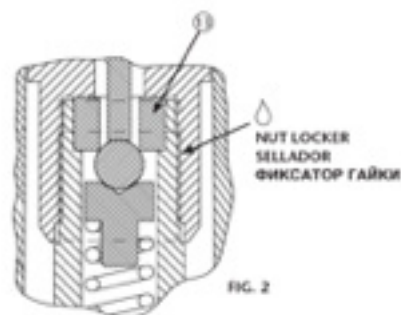
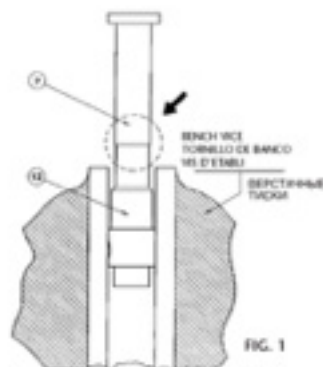
- Remove components.
- Remove the valve's inner body.
- Clamp the upper component in a bench vise.
- Unscrew the lower component using a Stilson wrench (pipe wrench).
- Separate both parts once fully unscrewed.
- When assembling, place the chamfered side of piece in contact with the ball.
- Install all components in reverse order.
- Thoroughly clean and check all components.
- Replace all damaged parts before assembly.



Note: The valve seat can deteriorate due to the accumulation of impurities present in the grease. This causes grease to leak even when the gun is at rest (without the trigger being pressed). Regularly check the valve. Replace broken, damaged, or worn parts.

b. Trigger:

- Unscrew components.
- Remove the pin.
- Remove trigger.
- Install all components in reverse order.
- Thoroughly clean and check all components.
- Replace all damaged parts before assembly.

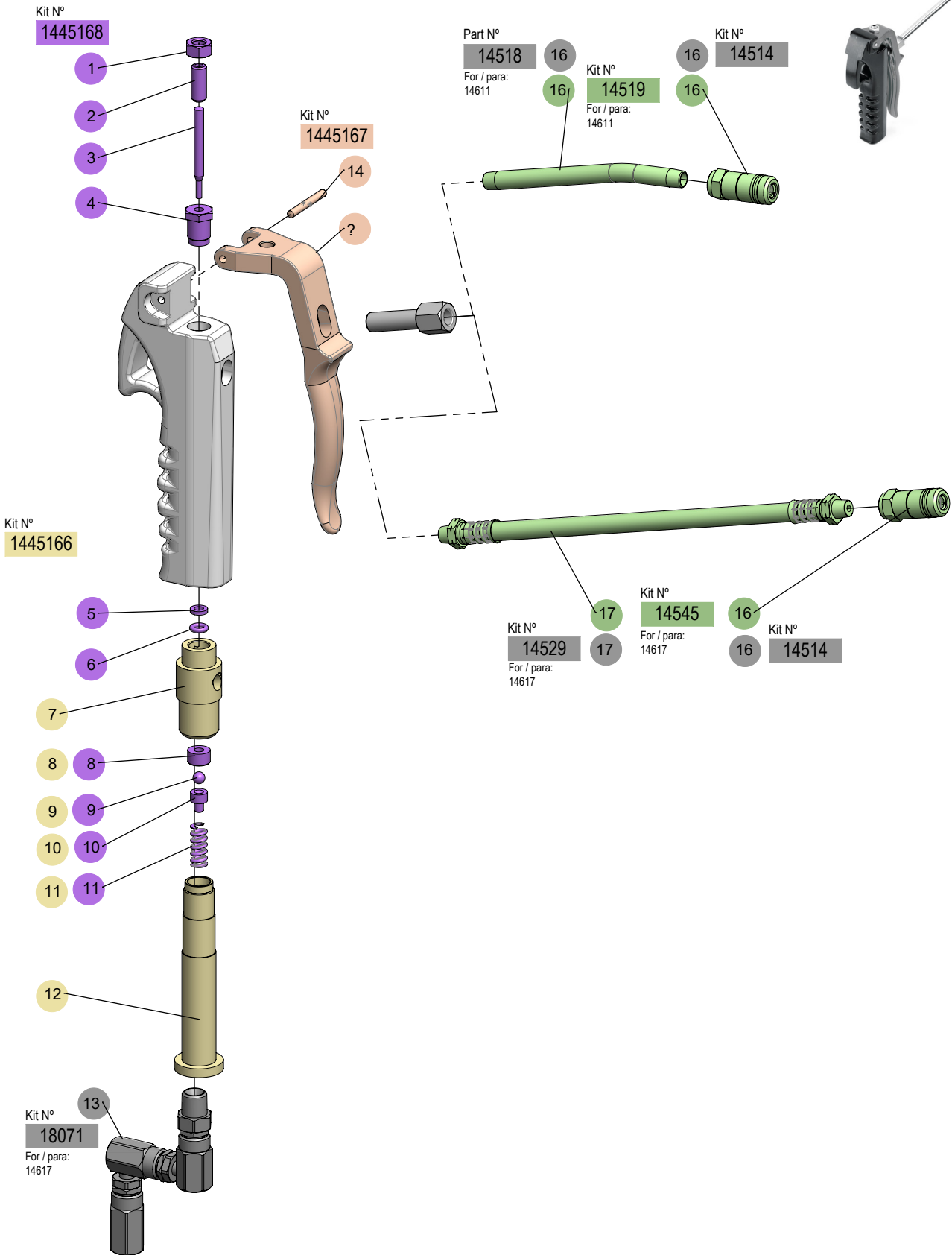


GREASE CONTROL VALVES

500 BAR GREASE CONTROL VALVE

Part #

**14611
14617**



KITS

Part #	Pos.	Description / Beskrivning	For / För
14519	16, 17	Rigid Outlet Kit <i>Styvt Utloppskit</i>	14611
14545	17, 18	Flexible Outlet Kit <i>Flexibelt Utloppskit</i>	14617
1445166	7, 8, 9, 10, 11	Semibody Kit <i>Halvkroppskit</i>	-
1445167	14, 15	Trigger Kit <i>Avtryckarsats</i>	-
1445168	1, 2, 4, 5, 6, 8, 9, 10, 11, 12	Valve Set <i>Ventilsats</i>	-

PARTS

Part #	Pos.	Description / Beskrivning	For / För
14514	17	Hydraulic Connector <i>Hydraulisk Koppling</i>	-
14518	16	Rigid Outlet Tube <i>Styvt Utloppsrör</i>	14611
14529	18	Flexible Outlet <i>Flexibelt Utlopp</i>	14617
18071	13	Swivel "Z" Type <i>Svivel Av Z-Typ</i>	14617

2026_03_10-12:56





EC DECLARATION OF CONFORMITY



The manufacturer



Alentec&Orion AB, Grustagsvägen 4, SE-13840,
Älta, Sweden
info@alentec.se · www.alentec.com

Declares under its own responsibility, that the product:

14611
High Pressure Grease Control Gun PG-77

complies with the directives: **2006/42/CE**

This declaration refers exclusively to the product in the state in which it was placed on the market, excluding added components and modifications made by the end user.

Krister Tynhage
Managing Director

Johan Norman
Product Manager

2026.03_10-12:56



www.alentec.com



Alentec & Orion AB Grustagsvägen 4, SE-13840, Älta, SWEDEN · info@alentec.se · www.alentec.com

8 841801.500

REV.03_26

2026_03_10-12:56