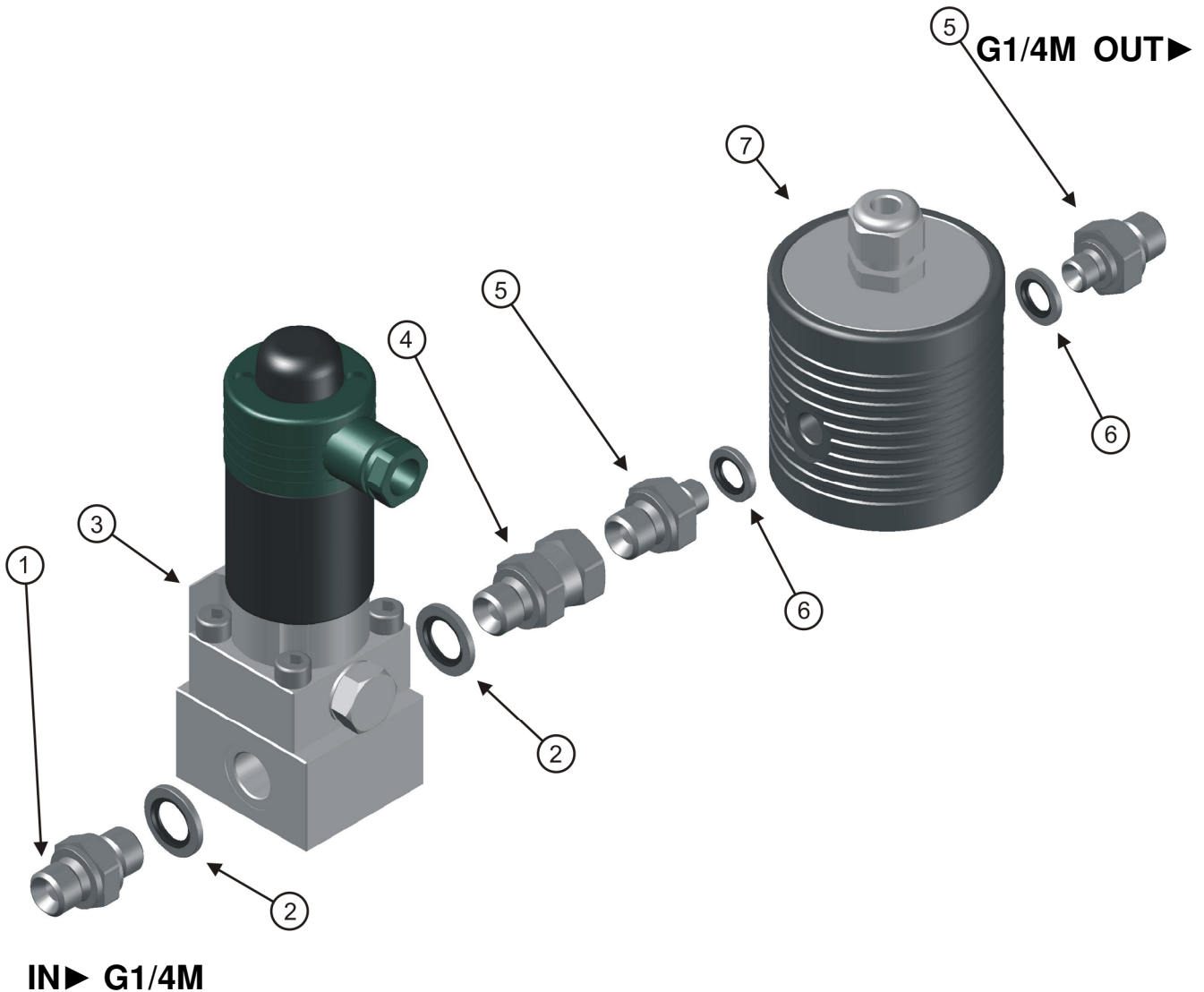




Mätverk för fett med 1450 pulser/liter och ¼" magnetventil, 24VDC
 In-Line meter for grease with 1450 pulses/litre and ¼" solenoid valve, 24VDC

Max arbetstryck/Max working pressure = 50MPa/500bar



 = Flytande tätningsmedel vid alla gänganslutningar
 = Liquid sealant at all thread points

Benämning / Description				Antal Quantity	Art.nr. Part. No.
Pos.	1	Nippel / Adapter,	G1/4M-G1/4M	1	25101981
Pos.	2	Gummi-stålbricka / Rubber-Steel washer,	GBR1/4	2	10103529
Pos.	3	Magnetventil för fett/ Solenoid valve for grease,	24VDC, G1/4F-G1/4F	1	38013
Pos.	4	Nippel / Adapter,	svivlande / swiveling G1/4F – G1/4M	1	25102341
Pos.	5	Nippel / Adapter,	G1/4M- G1/8M	2	25102023
Pos.	6	Gummi-stålbricka / Rubber-Steel washer,	GBR1/8	2	10103532
Pos.	7	Volymmätare för fett / Volume meter for grease		1	14730