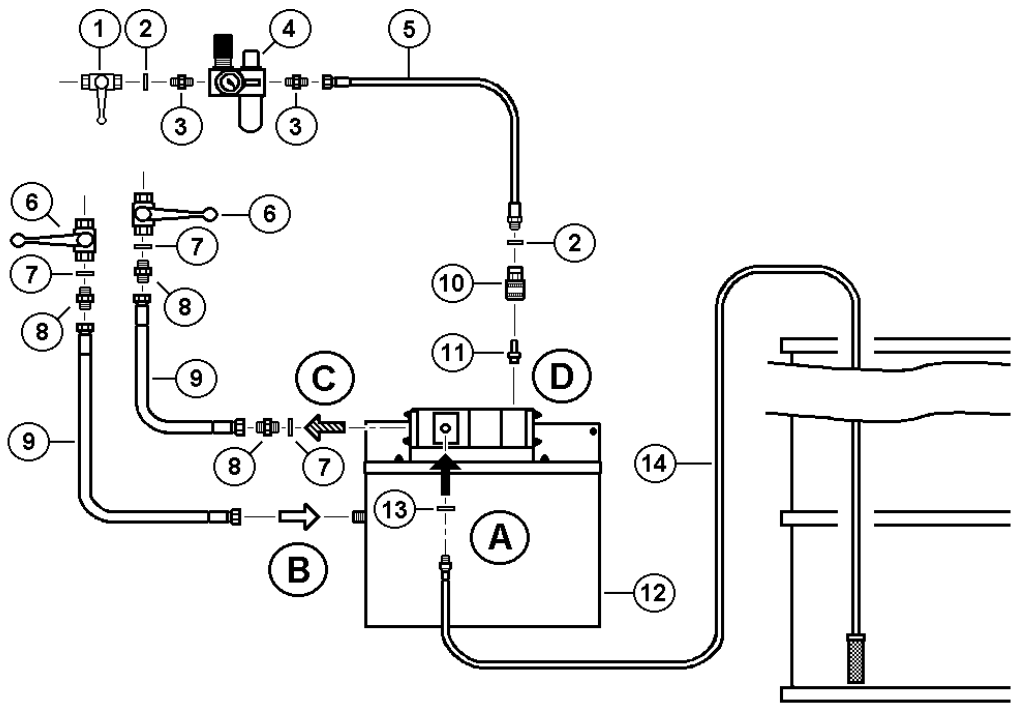



  
**ORION**<sup>®</sup>  
 Alentec Orion Ltd UK  
  
 Specification  
 Manual (UK)



|   | <b>Page No.</b> |
|---|-----------------|
| 1:1 Ratio Oil Pumps                                     | 3               |
| 3:1 Ratio Oil Pumps                                     | 7               |
| 5:1 Ratio Oil Pumps                                     | 13              |
| Cased Hose Reels for Oil (CRM and MR Series)            | 19              |
| Open Hose Reels for Oil (OR, ORM, ORK, ORL, LOR series) | 23              |
| 75:1 Ratio Grease Pumps                                 | 30              |
| 55:1 Ratio Grease Pumps                                 | 32              |
| Hose Reels for Grease (CRM, ORK, ORM series)            | 34              |
| Water Glycol Mixing Unit                                | 36              |
| Pump Protection Kit                                     | 37              |

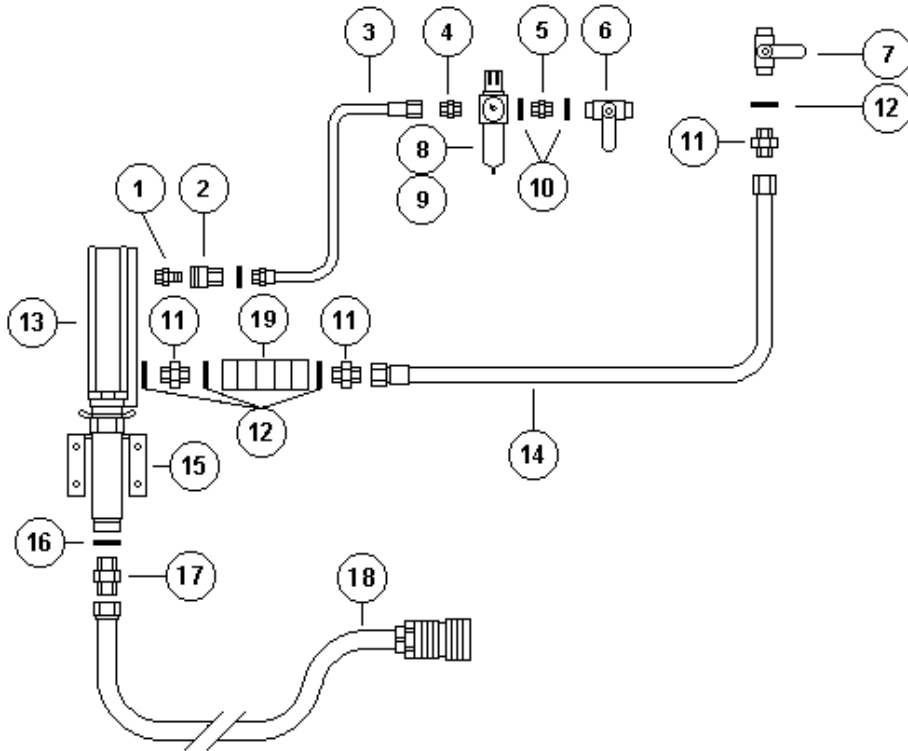
Document Ref: UKSPEC7.doc  
Issue 7 (June 2005)

Alentec Orion Ltd.  
Bruce Way  
Whetstone  
Leicester  
LE8 6HP

**Tel:** 0116 284 6040

**Fax:** 0116 284 6070

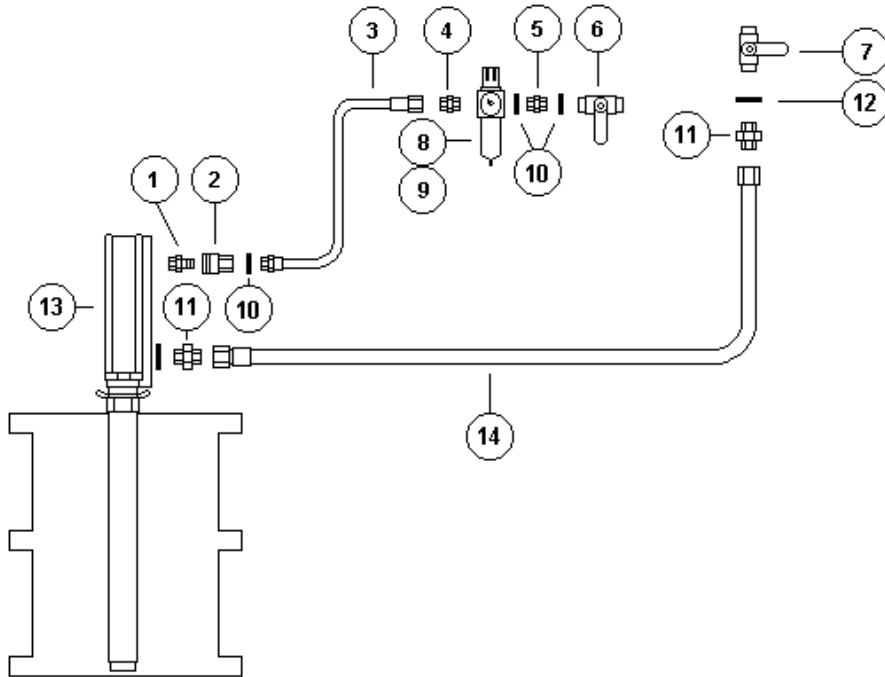
## 6025 1:1 Wall mounted pump kit for waste oil



| Item | Part No. | Description          | Qty |
|------|----------|----------------------|-----|
| 1    | 48501    | Nipple ¼" BSP        | 1   |
| 2    | 44516    | Female Coupler       | 1   |
| 3    | 48001    | Air Line Hose        | 1   |
| 4    | 3096-4R4 | Adapter              | 1   |
| 5    | 01014    | Adapter ¼" BSP       | 1   |
| 6    | 101-1/4  | Shut Off Valve       | 1   |
| 7    | 101-3/4  | Shut Off Valve       | 1   |
| 8    | 42007    | Filter Regulator     | 1   |
| 9    | 274Z160  | Pressure Gauge       | 1   |
| 10   | GBR-1/4  | Dowty Washer         | 3   |
| 11   | 010112   | Adapter ¾" (M)       | 2   |
| 12   | GBR-3/4  | Dowty Washer         | 2   |
| 13   | 22704    | 1:1 Oil Suction Pump | 1   |
| 14   | 28079    | Oil Hose             | 1   |
| 15   | 28524    | Wall Bracket         | 1   |
| 16   | GBR-1    | Dowty Washer         | 1   |
| 17   | 28079    | Suction Hose         | 1   |
| 18   | 010116   | Adapter 1"           | 1   |
| 19   | VCH3/4   | Non Return Valve     | 1   |

The illustrated product may differ slightly from that supplied

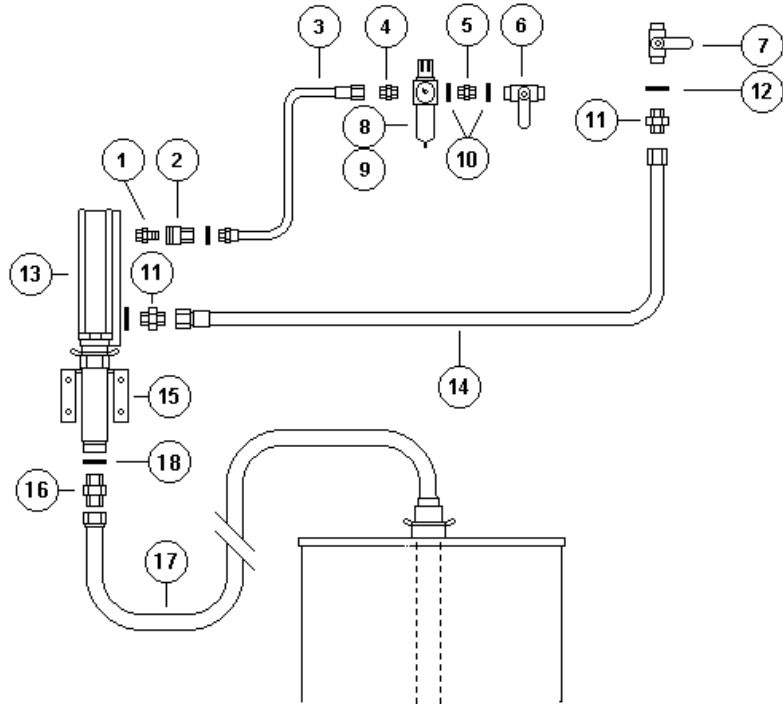
## 201 GB Pump kit with drum mounted 1:1 transfer pump



| Item | Part No. | Description       | Qty |
|------|----------|-------------------|-----|
| 1    | 48501    | Nipple 1/4" BSP   | 1   |
| 2    | 44516    | Female Coupler    | 1   |
| 3    | 48001    | Air Line Hose     | 1   |
| 4    | 3096-4R4 | Adapter           | 1   |
| 5    | 01014    | Adapter 1/4" BSP  | 1   |
| 6    | 101-1/4  | Shut Off Valve    | 1   |
| 7    | 101-3/4  | Shut Off Valve    | 1   |
| 8    | 42007    | Filter Regulator  | 1   |
| 9    | 274Z160  | Pressure Gauge    | 1   |
| 10   | GBR-1/4  | Dowty Washer      | 3   |
| 11   | 010112   | Adapter 3/4" (M)  | 2   |
| 12   | GBR-3/4  | Dowty Washer      | 2   |
| 13   | 22705    | 1:1 Transfer Pump | 1   |
| 14   | 28079    | Oil Hose          | 1   |

The illustrated product may differ slightly from that supplied

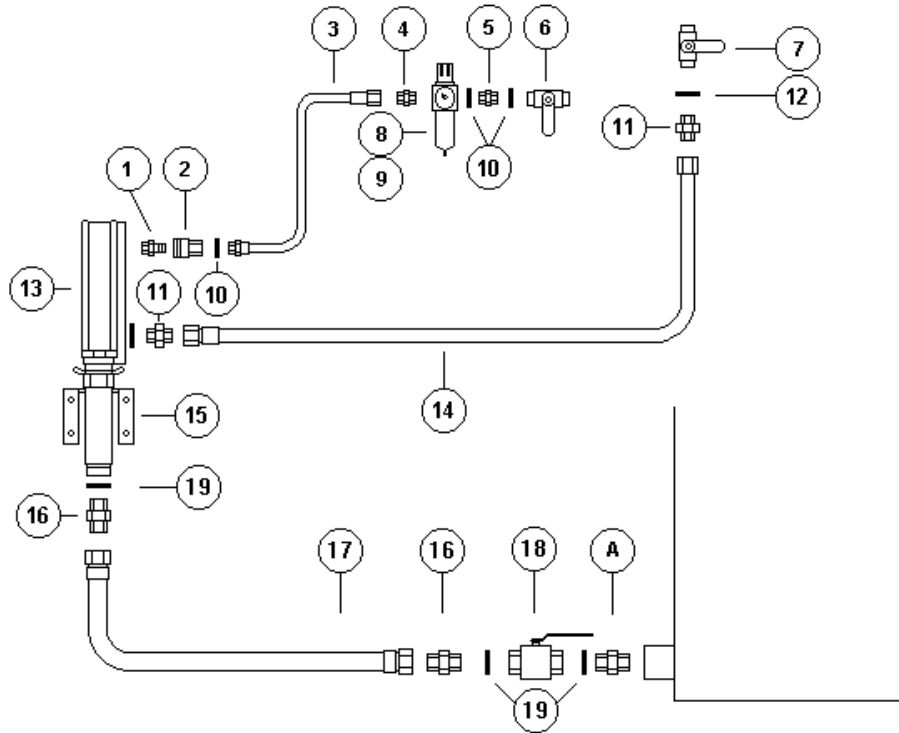
## 202 GB Pump kit with wall mounted 1:1 pump and drum suction attachment



| Item | Part No. | Description      | Qty |
|------|----------|------------------|-----|
| 1    | 48501    | Nipple ¼" BSP    | 1   |
| 2    | 44516    | Female Coupler   | 1   |
| 3    | 48001    | Air Line Hose    | 1   |
| 4    | 3096-4R4 | Adapter          | 1   |
| 5    | 01014    | Adapter ¼" BSP   | 1   |
| 6    | 101-1/4  | Shut Off Valve   | 1   |
| 7    | 101-3/4  | Shut Off Valve   | 1   |
| 8    | 42007    | Filter Regulator | 1   |
| 9    | 274Z160  | Pressure Gauge   | 1   |
| 10   | GBR-1/4  | Dowty Washer     | 3   |
| 11   | 010112   | Adapter ¾" (M)   | 2   |
| 12   | GBR-1    | Dowty Washer     | 2   |
| 13   | 22700    | 1:1 Oil Pump     | 1   |
| 14   | 28079    | Oil Hose         | 1   |
| 15   | 28524    | Wall Bracket     | 1   |
| 16   | 010116   | Adapter 1"       | 1   |
| 17   | 28201    | Drum Attachment  | 1   |

The illustrated product may differ slightly from that supplied

## 203 GB Pump kit with wall mounted 1:1 pump, bottom tank outlet

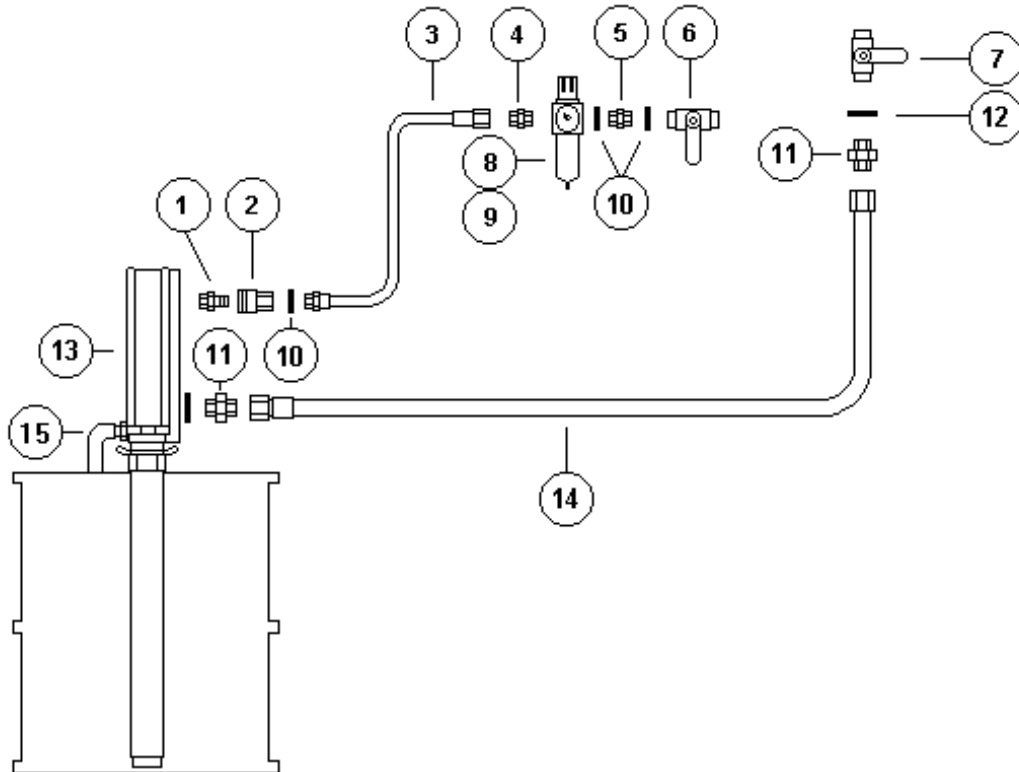


| Item | Part No. | Description      | Qty |
|------|----------|------------------|-----|
| 1    | 48501    | Nipple 1/4" BSP  | 1   |
| 2    | 44516    | Female Coupler   | 1   |
| 3    | 48001    | Air Line Hose    | 1   |
| 4    | 3096-4R4 | Adapter          | 1   |
| 5    | 01014    | Adapter 1/4" BSP | 1   |
| 6    | 101-1/4  | Shut Off Valve   | 1   |
| 7    | 101-3/4  | Shut Off Valve   | 1   |
| 8    | 42007    | Filter Regulator | 1   |
| 9    | 274Z160  | Pressure Gauge   | 1   |
| 10   | GBR-1/4  | Dowty Washer     | 3   |
| 11   | 010112   | Adapter 3/4" (M) | 2   |
| 12   | GBR-3/4  | Dowty Washer     | 2   |
| 13   | 22700    | 1:1 Oil Pump     | 1   |
| 14   | 28079    | Oil Hose         | 1   |
| 15   | 28524    | Wall Bracket     | 1   |
| 16   | 010116   | Adapter 1"       | 2   |
| 17   | 28079    | Suction Hose     | 1   |
| 18   | 101-1    | Shut off Valve   | 1   |
| 19   | GBR-1    | Dowty Washer     | 3   |

**NOTE: Adapter 'A' to be supplied by installer to suit tank outlet**

The illustrated product may differ slightly from that supplied

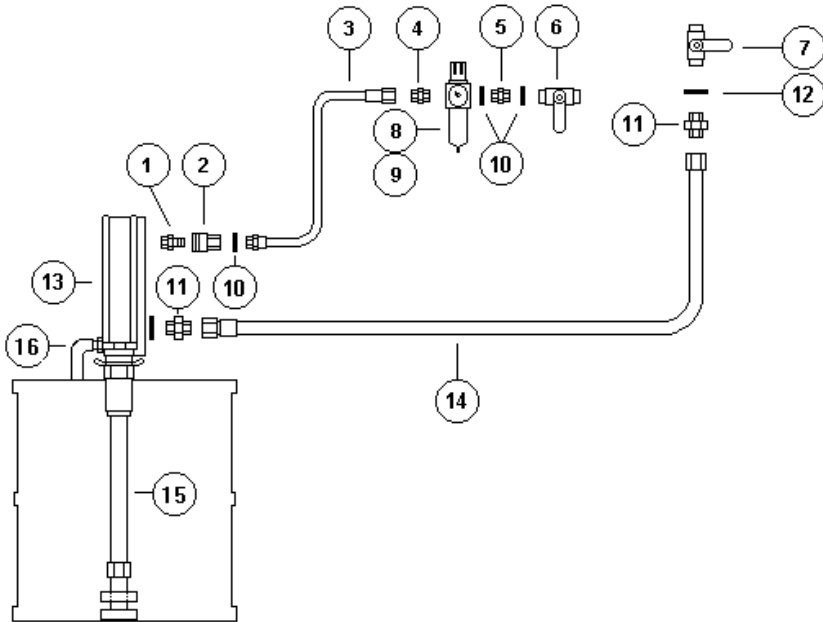
## 204 GB Pump kit with drum mounted 3:1 pump



| Item | Part No. | Description           | Qty |
|------|----------|-----------------------|-----|
| 1    | 48501    | Nipple 1/4" BSP       | 1   |
| 2    | 44516    | Female Coupler        | 1   |
| 3    | 48001    | Air Line Hose         | 1   |
| 4    | 3096-4R4 | Adapter               | 1   |
| 5    | 01014    | Adapter 1/4" BSP      | 1   |
| 6    | 101-1/4  | Shut Off Valve        | 1   |
| 7    | 101-3/4  | Shut Off Valve        | 1   |
| 8    | 42007    | Filter Regulator      | 1   |
| 9    | 274Z160  | Pressure Gauge        | 1   |
| 10   | GBR-1/4  | Dowty Washer          | 3   |
| 11   | 010112   | Adapter 3/4" (M)      | 2   |
| 12   | GBR-3/4  | Dowty Washer          | 2   |
| 13   | 22715    | 3:1 Oil Pump          | 1   |
| 14   | 28079    | Oil Hose              | 1   |
| 15   | 28623    | Pressure Relief Valve | 1   |
| 15   | CTR 5/16 | Relief Hose           | 2m  |
| 15   | M00      | Jubilee Clip          | 1   |

The illustrated product may differ slightly from that supplied

## 204 GBA Pump kit with drum mounted 3:1 pump

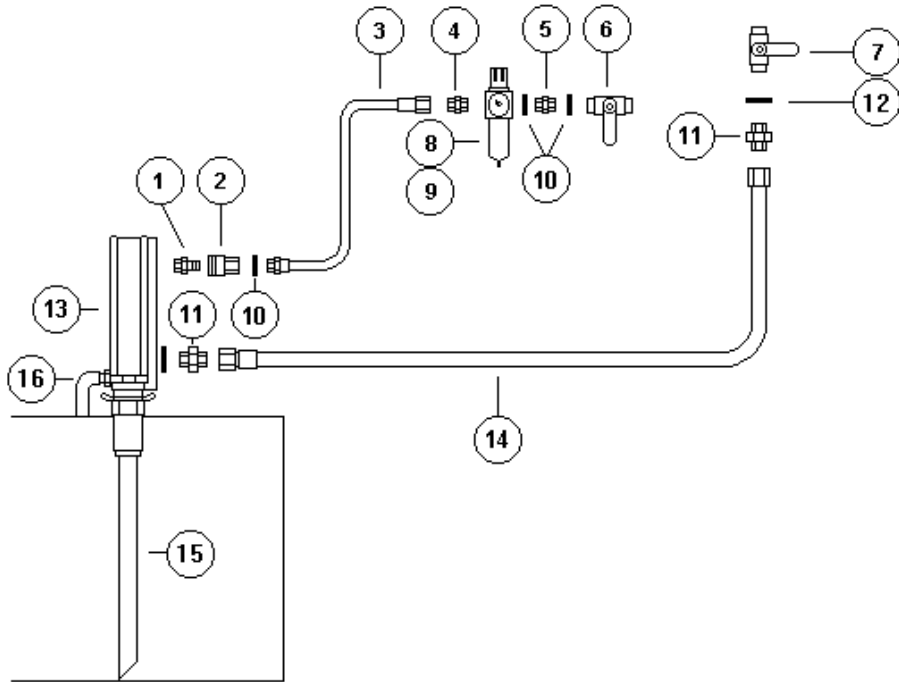


| Item | Part No. | Description                                | Qty |
|------|----------|--|-----|
| 1    | 48501    | Nipple ¼" BSP                              | 1   |
| 2    | 44516    | Female Coupler                             | 1   |
| 3    | 48001    | Air Line Hose                              | 1   |
| 4    | 3096-4R4 | Adapter                                    | 1   |
| 5    | 01014    | Adapter ¼" BSP                             | 1   |
| 6    | 101-1/4  | Shut Off Valve                             | 1   |
| 7    | 101-3/4  | Shut Off Valve                             | 1   |
| 8    | 42007    | Filter Regulator                           | 1   |
| 9    | 274Z160  | Pressure Gauge                             | 1   |
| 10   | GBR-1/4  | Dowty Washer                               | 3   |
| 11   | 010112   | Adapter ¾" (M)                             | 2   |
| 12   | GBR-3/4  | Dowty Washer                               | 2   |
| 13   | 22710    | 3:1 Oil Pump                               | 1   |
| 14   | 28079    | Oil Hose                                   | 1   |
| 15   | 22012    | Riser tube with air eliminator (205l drum) | 1   |
| 16   | 28623    | Pressure Relief Valve                      | 1   |
| 16   | CTR 5/16 | Relief Hose                                | 2m  |
| 16   | M00      | Jubilee Clip                               | 1   |

The illustrated product may differ slightly from that supplied



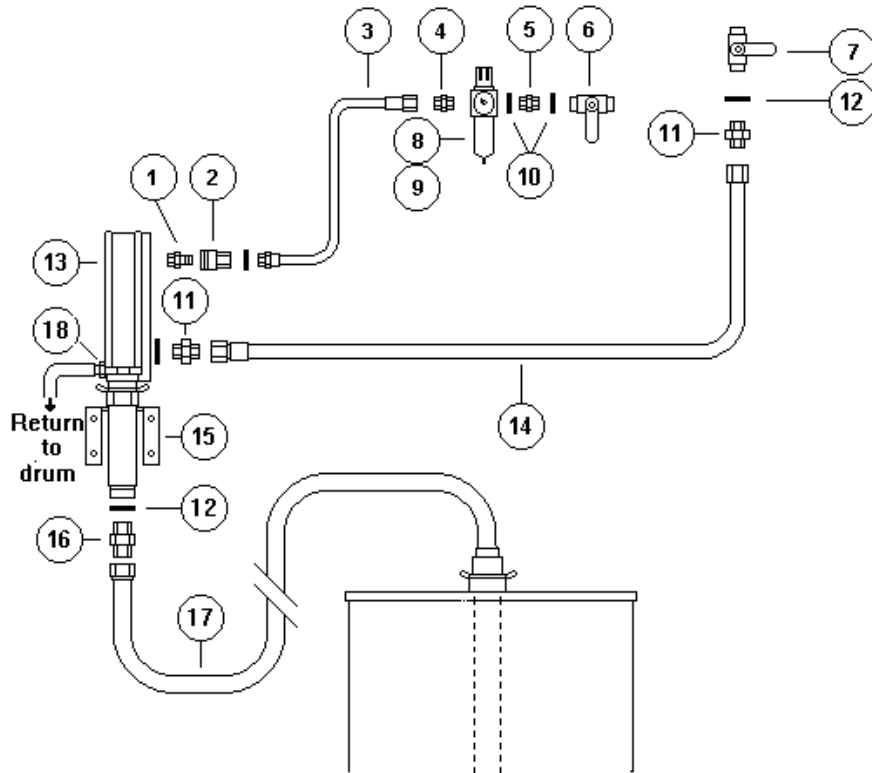
## 204 GBB4 Pump kit with tank mounted 3:1 pump



| Item | Part No. | Description           | Qty |
|------|----------|-----------------------|-----|
| 1    | 48501    | Nipple 1/4" BSP       | 1   |
| 2    | 44516    | Female Coupler        | 1   |
| 3    | 48001    | Air Line Hose         | 1   |
| 4    | 3096-4R4 | Adapter               | 1   |
| 5    | 01014    | Adapter 1/4" BSP      | 1   |
| 6    | 101-1/4  | Shut Off Valve        | 1   |
| 7    | 101-3/4  | Shut Off Valve        | 1   |
| 8    | 42007    | Filter Regulator      | 1   |
| 9    | 274Z160  | Pressure Gauge        | 1   |
| 10   | GBR-1/4  | Dowty Washer          | 3   |
| 11   | 010112   | Adapter 3/4" (M)      | 2   |
| 12   | GBR-3/4  | Dowty Washer          | 2   |
| 13   | 22710    | 3:1 Oil Pump          | 1   |
| 14   | 28079    | Oil Hose              | 1   |
| 15   | 22016    | Riser tube (4ft tank) | 1   |
| 16   | 28623    | Pressure Relief Valve | 1   |
| 16   | CTR 5/16 | Relief Hose           | 2m  |
| 16   | M00      | Jubilee Clip          | 1   |

The illustrated product may differ slightly from that supplied

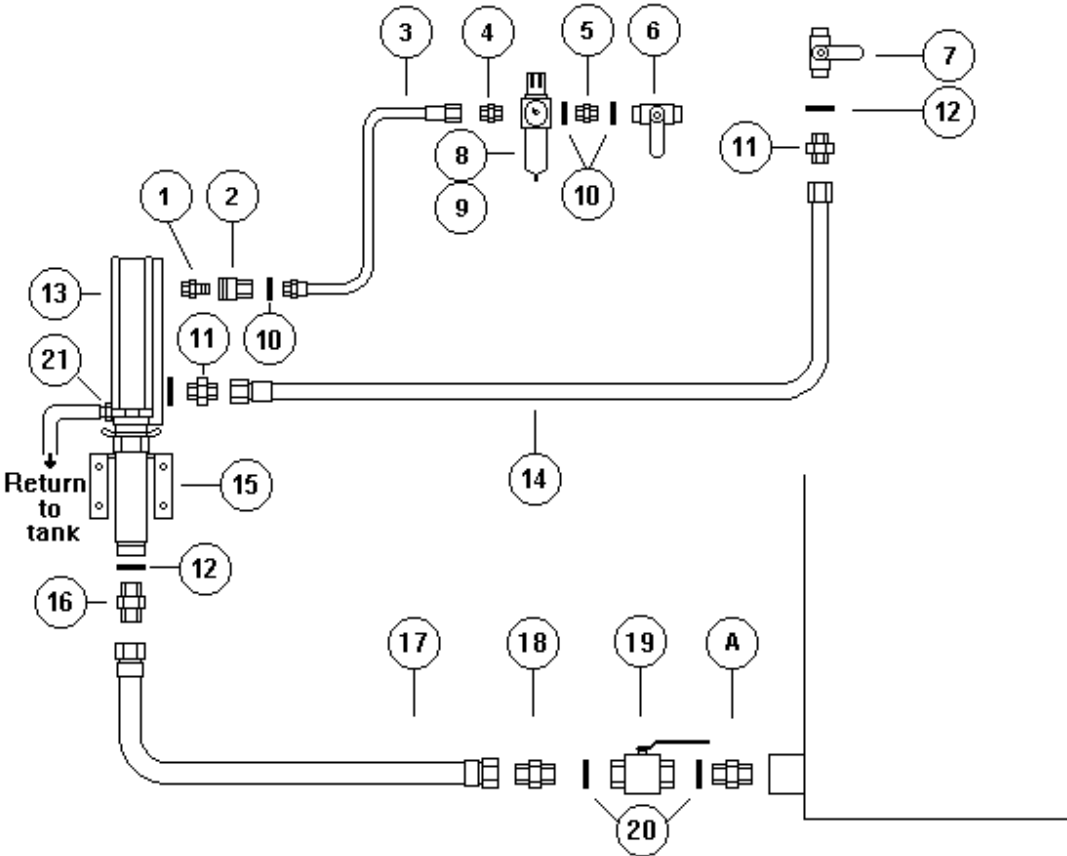
## 205 GB Pump kit with wall mounted 3:1 pump and drum suction attachment



| Item | Part No. | Description           | Qty |
|------|----------|-----------------------|-----|
| 1    | 48501    | Nipple ¼" BSP         | 1   |
| 2    | 44516    | Female Coupler        | 1   |
| 3    | 48001    | Air Line Hose         | 1   |
| 4    | 3096-4R4 | Adapter               | 1   |
| 5    | 01014    | Adapter ¼" BSP        | 1   |
| 6    | 101-1/4  | Shut Off Valve        | 1   |
| 7    | 101-3/4  | Shut Off Valve        | 1   |
| 8    | 42007    | Filter Regulator      | 1   |
| 9    | 274Z160  | Pressure Gauge        | 1   |
| 10   | GBR-1/4  | Dowty Washer          | 3   |
| 11   | 010112   | Adapter ¾" (M)        | 2   |
| 12   | GBR-3/4  | Dowty Washer          | 2   |
| 13   | 22710    | 3:1 Oil Pump          | 1   |
| 14   | 28079    | Oil Hose              | 1   |
| 15   | 28524    | Wall Bracket          | 1   |
| 16   | 01011612 | Adapter 1" x ¾" (M)   | 1   |
| 17   | 28201    | Drum Attachment       | 1   |
| 18   | 28623    | Pressure Relief Valve | 1   |
| 18   | CTR 5/16 | Relief Hose           | 2m  |
| 18   | M00      | Jubilee Clip          | 1   |

The illustrated product may differ slightly from that supplied

## 206 GB Pump kit with wall mounted 3:1 pump for bottom tank outlet

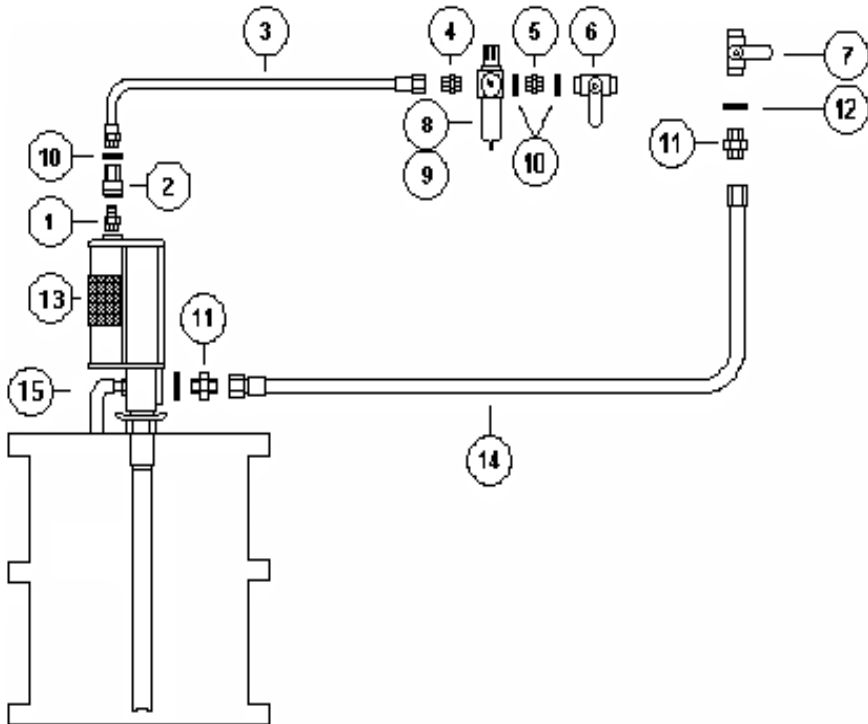


| Item | Part No. | Description           | Qty |
|------|----------|-----------------------|-----|
| 1    | 48501    | Nipple ¼" BSP         | 1   |
| 2    | 44516    | Female Coupler        | 1   |
| 3    | 48001    | Air Line Hose         | 1   |
| 4    | 3096-4R4 | Adapter               | 1   |
| 5    | 01014    | Adapter ¼" BSP        | 1   |
| 6    | 101-1/4  | Shut Off Valve        | 1   |
| 7    | 101-3/4  | Shut Off Valve        | 1   |
| 8    | 42007    | Filter Regulator      | 1   |
| 9    | 274Z160  | Pressure Gauge        | 1   |
| 10   | GBR-1/4  | Dowty Washer          | 3   |
| 11   | 010112   | Adapter ¾" (M)        | 2   |
| 12   | GBR-3/4  | Dowty Washer          | 3   |
| 13   | 22710    | 3:1 Oil Pump          | 1   |
| 14   | 28079    | Oil Hose              | 1   |
| 15   | 28524    | Wall Bracket          | 1   |
| 16   | 01011612 | Adapter 1" x ¾" (M)   | 1   |
| 17   | 28078    | Suction Hose          | 1   |
| 18   | 010116   | Adapter 1" (M)        | 1   |
| 19   | 101-1    | Shut off Valve        | 1   |
| 20   | GBR-1    | Dowty Washer          | 2   |
| 21   | 28623    | Pressure Relief Valve | 1   |
| 21   | CTR 5/16 | Relief Hose           | 2m  |
| 21   | M00      | Jubilee Clip          | 1   |

**NOTE: Adapter 'A' to be supplied by installer to suit tank outlet**

The illustrated product may differ slightly from that supplied

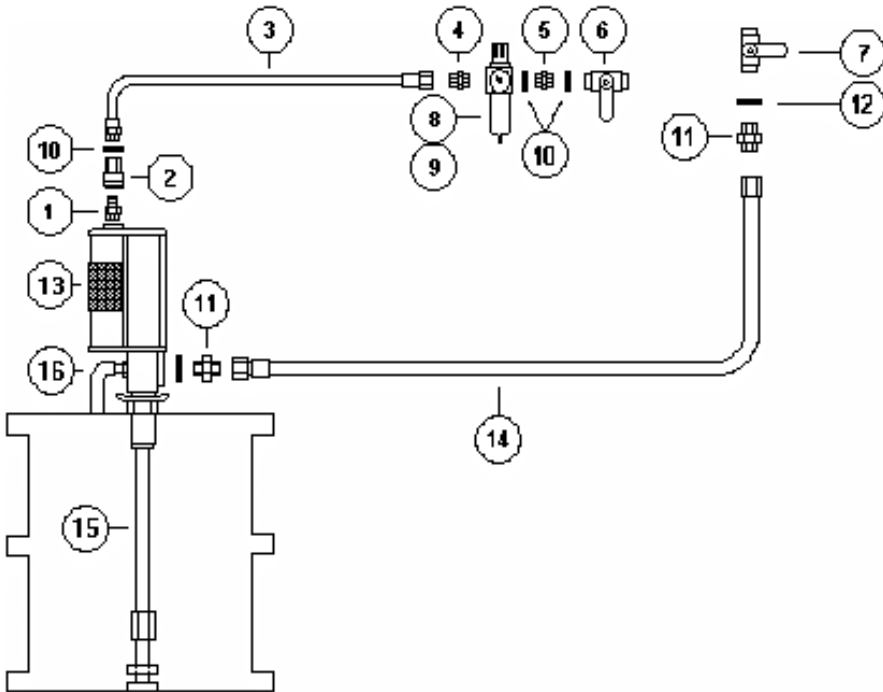
## 275 GB Pump kit with drum mounted 5:1 pump



| Item | Part No. | Description           | Qty |
|------|----------|-----------------------|-----|
| 1    | 48501    | Nipple 1/4" BSP       | 1   |
| 2    | 44516    | Female Coupler        | 1   |
| 3    | 48001    | Air Line Hose         | 1   |
| 4    | 3096-4R4 | Adapter               | 1   |
| 5    | 01014    | Adapter 1/4" BSP      | 1   |
| 6    | 101-1/4  | Shut Off Valve        | 1   |
| 7    | 101-3/4  | Shut Off Valve        | 1   |
| 8    | 42007    | Filter Regulator      | 1   |
| 9    | 274Z160  | Pressure Gauge        | 1   |
| 10   | GBR-1/4  | Dowty Washer          | 3   |
| 11   | 010112   | Adapter 3/4" (M)      | 2   |
| 12   | GBR-3/4  | Dowty Washer          | 2   |
| 13   | 22752    | 5:1 Oil Pump          | 1   |
| 14   | 28079    | Oil Hose              | 1   |
| 15   | 28623    | Pressure Relief Valve | 1   |
| 15   | CTR 5/16 | Relief Hose           | 2m  |
| 15   | M00      | Jubilee Clip          | 1   |

The illustrated product may differ slightly from that supplied

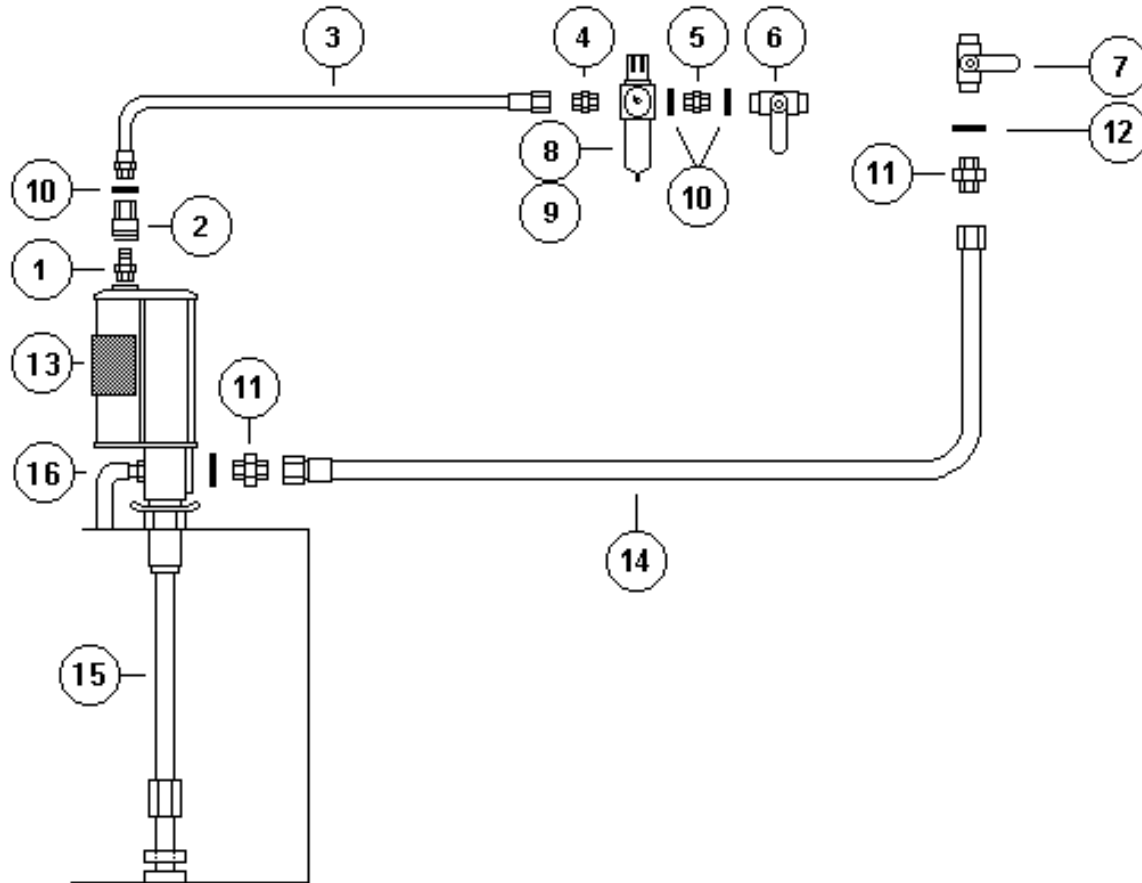
## 275 GBA Pump kit with drum mounted 5:1 pump



| Item | Part No. | Description                                | Qty |
|------|----------|--|-----|
| 1    | 48501    | Nipple 1/4" BSP                            | 1   |
| 2    | 44516    | Female Coupler                             | 1   |
| 3    | 48001    | Air Line Hose                              | 1   |
| 4    | 3096-4R4 | Adapter                                    | 1   |
| 5    | 01014    | Adapter 1/4" BSP                           | 1   |
| 6    | 101-1/4  | Shut Off Valve                             | 1   |
| 7    | 101-3/4  | Shut Off Valve                             | 1   |
| 8    | 42007    | Filter Regulator                           | 1   |
| 9    | 274Z160  | Pressure Gauge                             | 1   |
| 10   | GBR-1/4  | Dowty Washer                               | 3   |
| 11   | 010112   | Adapter 3/4" (M)                           | 2   |
| 12   | GBR-3/4  | Dowty Washer                               | 2   |
| 13   | 22750    | 5:1 Oil Pump                               | 1   |
| 14   | 28079    | Oil Hose                                   | 1   |
| 15   | 22012    | Riser tube with air eliminator (205l drum) | 1   |
| 16   | 28623    | Pressure Relief Valve                      | 1   |
| 16   | CTR 5/16 | Relief Hose                                | 2m  |
| 16   | M00      | Jubilee Clip                               | 1   |

The illustrated product may differ slightly from that supplied

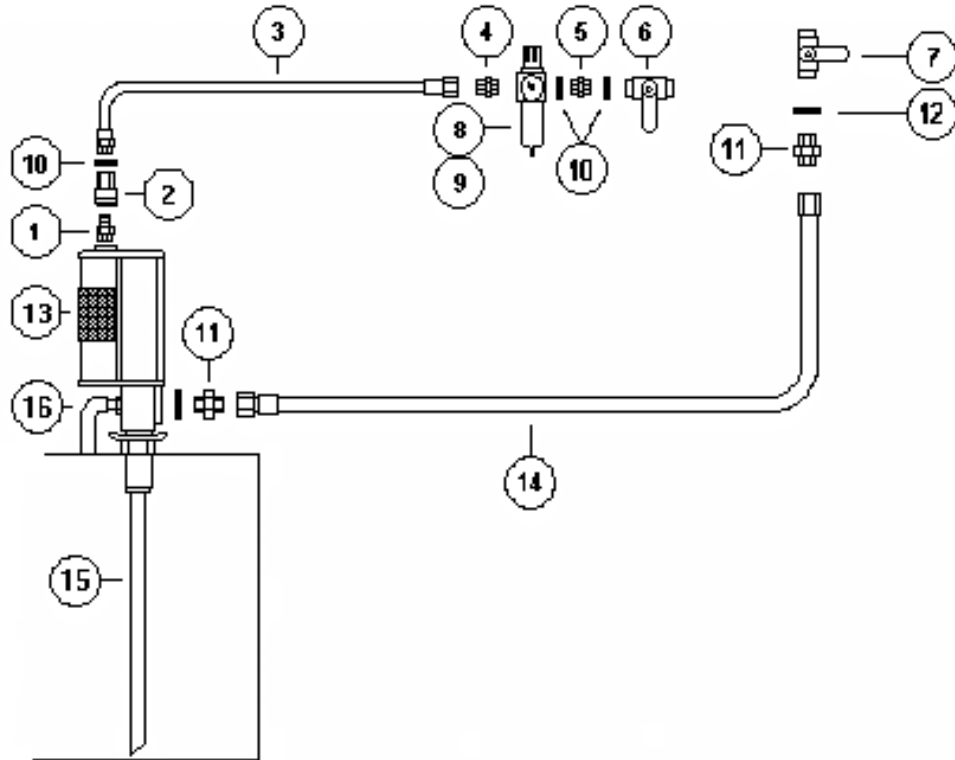
## 275 GBA4 Pump kit with tank mounted 5:1 pump



| Item | Part No. | Description                               | Qty |
|------|----------|---|-----|
| 1    | 48501    | Nipple ¼" BSP                             | 1   |
| 2    | 44516    | Female Coupler                            | 1   |
| 3    | 48001    | Air Line Hose                             | 1   |
| 4    | 3096-4R4 | Adapter                                   | 1   |
| 5    | 01014    | Adapter ¼" BSP                            | 1   |
| 6    | 101-1/4  | Shut Off Valve                            | 1   |
| 7    | 101-3/4  | Shut Off Valve                            | 1   |
| 8    | 42007    | Filter Regulator                          | 1   |
| 9    | 274Z160  | Pressure Gauge                            | 1   |
| 10   | GBR-1/4  | Dowty Washer                              | 3   |
| 11   | 010112   | Adapter ¾" (M)                            | 2   |
| 12   | GBR-3/4  | Dowty Washer                              | 2   |
| 13   | 22750    | 5:1 Oil Pump                              | 1   |
| 14   | 28079    | Oil Hose                                  | 1   |
| 15   | 22012    | Riser tube with air eliminator (4ft tank) | 1   |
| 16   | 28623    | Pressure Relief Valve                     | 1   |
| 16   | CTR 5/16 | Relief Hose                               | 2m  |
| 16   | M00      | Jubilee Clip                              | 1   |

The illustrated product may differ slightly from that supplied

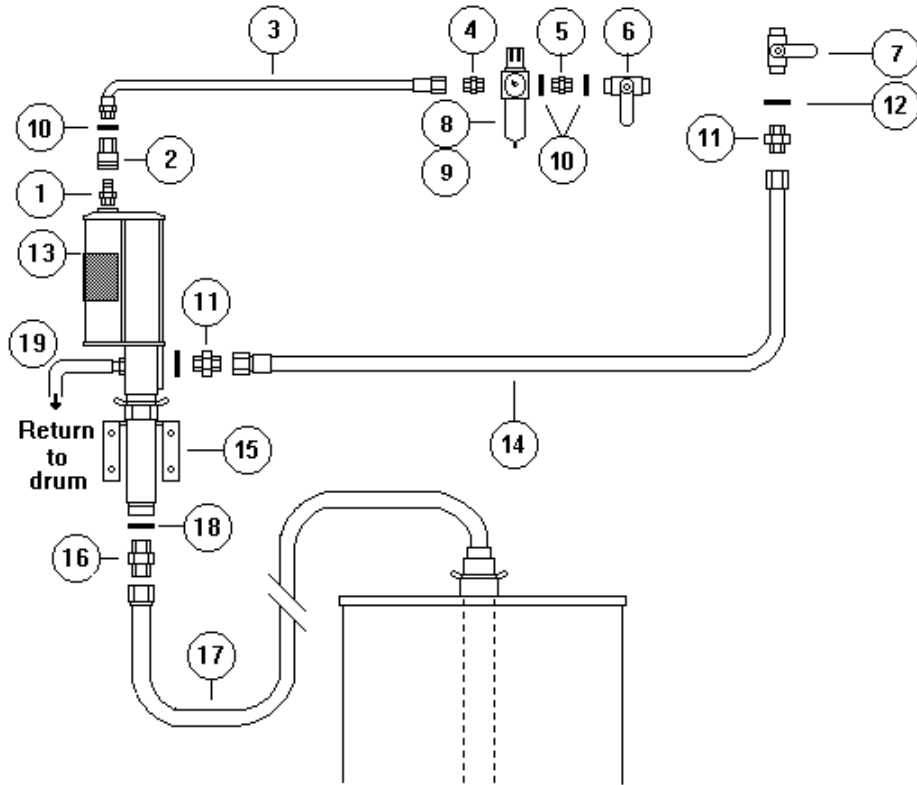
## 275 GBB4 Pump kit with tank mounted 5:1 pump



| Item | Part No. | Description           | Qty |
|------|----------|-----------------------|-----|
| 1    | 48501    | Nipple ¼" BSP         | 1   |
| 2    | 44516    | Female Coupler        | 1   |
| 3    | 48001    | Air Line Hose         | 1   |
| 4    | 3096-4R4 | Adapter               | 1   |
| 5    | 01014    | Adapter ¼" BSP        | 1   |
| 6    | 101-1/4  | Shut Off Valve        | 1   |
| 7    | 101-3/4  | Shut Off Valve        | 1   |
| 8    | 42007    | Filter Regulator      | 1   |
| 9    | 274Z160  | Pressure Gauge        | 1   |
| 10   | GBR-1/4  | Dowty Washer          | 3   |
| 11   | 010112   | Adapter ¾" (M)        | 2   |
| 12   | GBR-3/4  | Dowty Washer          | 2   |
| 13   | 22750    | 5:1 Oil Pump          | 1   |
| 14   | 28079    | Oil Hose              | 1   |
| 15   | 22019    | Riser tube (4ft tank) | 1   |
| 16   | 28623    | Pressure Relief Valve | 1   |
| 16   | CTR 5/16 | Relief Hose           | 2m  |
| 16   | M00      | Jubilee Clip          | 1   |

The illustrated product may differ slightly from that supplied

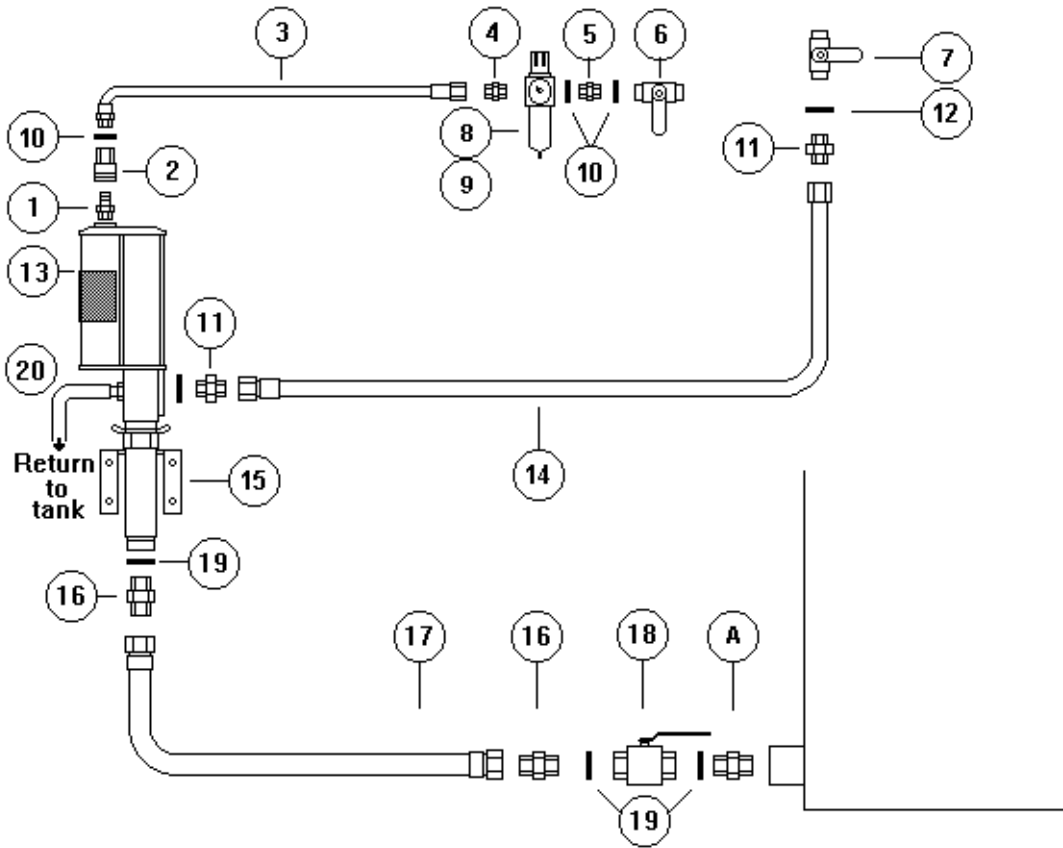
## 276 GB Pump kit with wall mounted 5:1 pump and drum suction attachment



| Item | Part No. | Description           | Qty |
|------|----------|-----------------------|-----|
| 1    | 48501    | Nipple 1/4" BSP       | 1   |
| 2    | 44516    | Female Coupler        | 1   |
| 3    | 48001    | Air Line Hose         | 1   |
| 4    | 3096-4R4 | Adapter               | 1   |
| 5    | 01014    | Adapter 1/4" BSP      | 1   |
| 6    | 101-1/4  | Shut Off Valve        | 1   |
| 7    | 101-3/4  | Shut Off Valve        | 1   |
| 8    | 42007    | Filter Regulator      | 1   |
| 9    | 274Z160  | Pressure Gauge        | 1   |
| 10   | GBR-1/4  | Dowty Washer          | 3   |
| 11   | 010112   | Adapter 3/4" (M)      | 2   |
| 12   | GBR-3/4  | Dowty Washer          | 2   |
| 13   | 22750    | 5:1 Oil Pump          | 1   |
| 14   | 28079    | Oil Hose              | 1   |
| 15   | 28524    | Wall Bracket          | 1   |
| 16   | 010116   | Adapter 1"            | 1   |
| 17   | 28201    | Drum Attachment       | 1   |
| 18   | GBR-1    | Dowty Washer          | 1   |
| 19   | 28623    | Pressure Relief Valve | 1   |
| 19   | CTR 5/16 | Relief Hose           | 2m  |
| 19   | M00      | Jubilee Clip          | 1   |

The illustrated product may differ slightly from that supplied

## 277 GB Pump kit with wall mounted 5:1 pump for bottom tank outlet

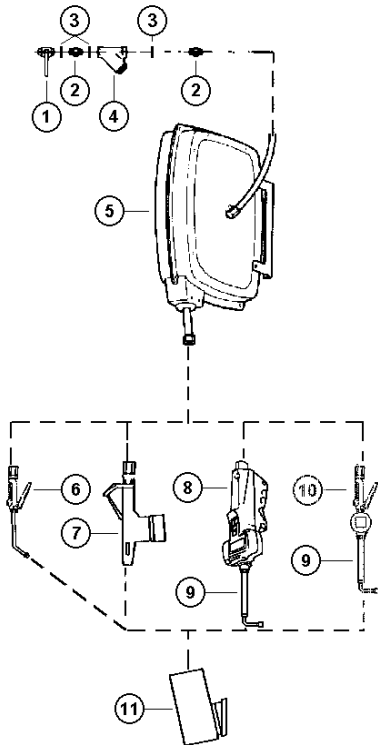


| Item | Part No. | Description           | Qty |
|------|----------|-----------------------|-----|
| 1    | 48501    | Nipple ¼" BSP         | 1   |
| 2    | 44516    | Female Coupler        | 1   |
| 3    | 48001    | Air Line Hose         | 1   |
| 4    | 3096-4R4 | Adapter               | 1   |
| 5    | 01014    | Adapter ¼" BSP        | 1   |
| 6    | 101-1/4  | Shut Off Valve        | 1   |
| 7    | 101-3/4  | Shut Off Valve        | 1   |
| 8    | 42007    | Filter Regulator      | 1   |
| 9    | 274Z160  | Pressure Gauge        | 1   |
| 10   | GBR-1/4  | Dowty Washer          | 3   |
| 11   | 010112   | Adapter ¾" (M)        | 2   |
| 12   | GBR-3/4  | Dowty Washer          | 2   |
| 13   | 22750    | 5:1 Oil Pump          | 1   |
| 14   | 28079    | Oil Hose              | 1   |
| 15   | 28524    | Wall Bracket          | 1   |
| 16   | 010116   | Adapter 1"            | 2   |
| 17   | 28078    | Suction Hose          | 1   |
| 18   | 101-1    | Shut-off Valve        | 1   |
| 19   | GBR-1    | Dowty Washer          | 3   |
| 20   | 28623    | Pressure Relief Valve | 1   |
| 20   | CTR 5/16 | Relief Hose           | 2m  |
| 20   | M00      | Jubilee Clip          | 1   |

**NOTE: Adapter 'A' to be supplied by installer to suit tank outlet**

The illustrated product may differ slightly from that supplied

- 261-CRM Distribution kit with oil gun (24572M)**
- 262-CRM with EEC-approved hose end meter (24101/D)**
- 263-CRM with commercial hose end meter (24700)**
- 264-CRM with preset hose end meter (24702)**
- 265-CRM with commercial hose end meter (24780)**

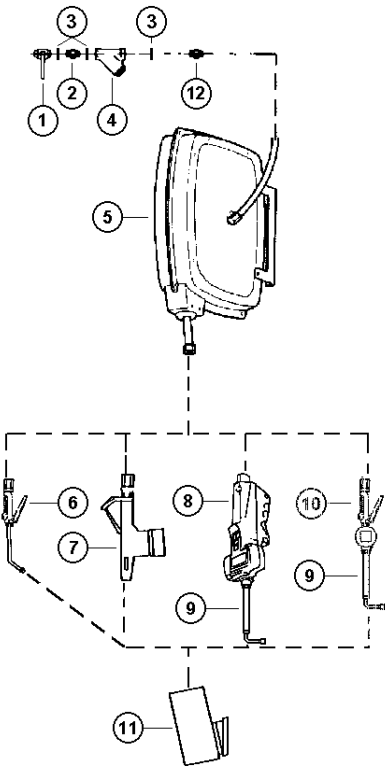


| Item | Description               | 261-CRM | 262-CRM | 263-CRM | 264-CRM | 265-CRM |
|------|---------------------------|---------|---------|---------|---------|---------|
| 1    | Shut-off valve            | 101-1/2 | 101-1/2 | 101-1/2 | 101-1/2 | 101-1/2 |
| 2    | Adapter 1/2" BSP          | 0101-8  | 0101-8  | 0101-8  | 0101-8  | 0101-8  |
| 3    | Dowty Washer              | GBR-1/2 | GBR-1/2 | GBR-1/2 | GBR-1/2 | GBR-1/2 |
| 4    | Oil Filter                | 28022   | 28022   | 28022   | 28022   | 28022   |
| 5    | Hose Reel (1/2" x 10m)    | 924910  | 924910  | 924910  | 924910  | 924910  |
| 6    | Oil gun                   | 24672M  | -       | -       | -       | -       |
| 7    | Hose end meter (approved) | -       | 24101/D | -       | -       | -       |
| 8    | Hose end meter            | -       | -       | 24700   | -       | -       |
| 8    | Hose end meter (preset)   | -       | -       | -       | 24702   | -       |
| 9    | Meter outlet hose         | -       | -       | 28676   | 28676   | -       |
| 10   | Hose end meter            | -       | -       | -       | -       | 24780   |
| 11   | Drip Pocket               | 29020   | 29020   | 29020   | 29020   | 29020   |

**All kits with 10m x 1/2" bore cased hose reel**

The illustrated product may differ slightly from that supplied

- 261-CRM 3/8 Distribution kit with oil gun (24572M)**
- 262-CRM 3/8 with EEC-approved hose end meter (24101/D)**
- 263-CRM 3/8 with commercial hose end meter (24700)**
- 264-CRM 3/8 with preset hose end meter (24702)**
- 265-CRM 3/8 with commercial hose end meter (24780)**

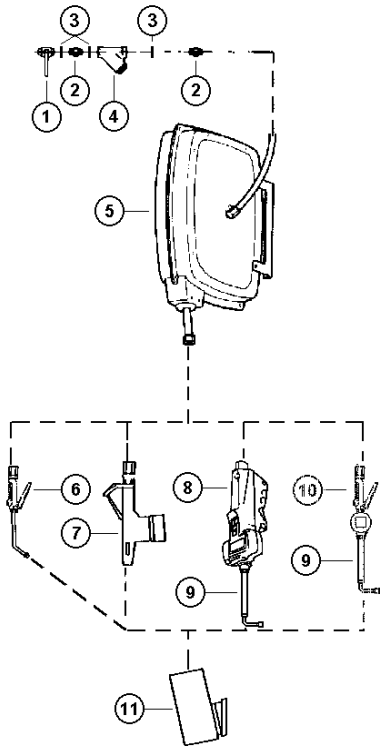


| Item | Description               | 261-CRM 3/8 | 262-CRM 3/8 | 263-CRM 3/8 | 264-CRM 3/8 | 265-CRM 3/8 |
|------|---------------------------|-------------|-------------|-------------|-------------|-------------|
| 1    | Shut-off valve            | 101-1/2     | 101-1/2     | 101-1/2     | 101-1/2     | 101-1/2     |
| 2    | Adapter 1/2" BSP          | 0101-8      | 0101-8      | 0101-8      | 0101-8      | 0101-8      |
| 3    | Dowty Washer              | GBR-1/2     | GBR-1/2     | GBR-1/2     | GBR-1/2     | GBR-1/2     |
| 4    | Oil Filter                | 28022       | 28022       | 28022       | 28022       | 28022       |
| 5    | Hose Reel (3/8" x 15m)    | 924905      | 924905      | 924905      | 924905      | 924905      |
| 6    | Oil gun                   | 24672M      | -           | -           | -           | -           |
| 7    | Hose end meter (approved) | -           | 24101/D     | -           | -           | -           |
| 8    | Hose end meter            | -           | -           | 24700       | -           | -           |
| 8    | Hose end meter (preset)   | -           | -           | -           | 24702       | -           |
| 9    | Meter outlet hose         | -           | -           | 28676       | 28676       | -           |
| 10   | Hose end meter            | -           | -           | -           | -           | 24780       |
| 11   | Drip Pocket               | 29020       | 29020       | 29020       | 29020       | 29020       |
| 12   | Adapter 1/2" x 3/8" BSP   | 0101-8-6    | 0101-8-6    | 0101-8-6    | 0101-8-6    | 0101-8-6    |

**All kits with 15m x 3/8" bore cased hose reel**

The illustrated product may differ slightly from that supplied

- 261-MR Distribution kit with oil gun (24572M)**
- 262-MR with EEC-approved hose end meter (24101/D)**
- 263-MR with commercial hose end meter (24700)**
- 264-MR with preset hose end meter (24702)**
- 265-MR with commercial hose end meter (24780)**

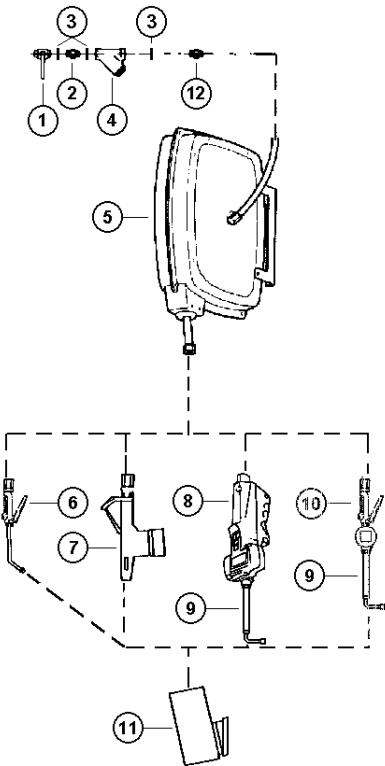


| Item | Description               | 261-MR  | 262-MR  | 263-MR  | 264-MR  | 265-MR  |
|------|---------------------------|---------|---------|---------|---------|---------|
| 1    | Shut-off valve            | 101-1/2 | 101-1/2 | 101-1/2 | 101-1/2 | 101-1/2 |
| 2    | Adapter 1/2" BSP          | 0101-8  | 0101-8  | 0101-8  | 0101-8  | 0101-8  |
| 3    | Dowty Washer              | GBR-1/2 | GBR-1/2 | GBR-1/2 | GBR-1/2 | GBR-1/2 |
| 4    | Oil Filter                | 28022   | 28022   | 28022   | 28022   | 28022   |
| 5    | Hose Reel (1/2" x 10m)    | 824910  | 824910  | 824910  | 824910  | 824910  |
| 6    | Oil gun                   | 24672M  | -       | -       | -       | -       |
| 7    | Hose end meter (approved) | -       | 24101/D | -       | -       | -       |
| 8    | Hose end meter            | -       | -       | 24700   | -       | -       |
| 8    | Hose end meter (preset)   | -       | -       | -       | 24702   | -       |
| 9    | Meter outlet hose         | -       | -       | 28676   | 28676   | -       |
| 10   | Hose end meter            | -       | -       | -       | -       | 24780   |
| 11   | Drip Pocket               | 29020   | 29020   | 29020   | 29020   | 29020   |

**All kits with 10m x 1/2" bore cased hose reel**

The illustrated product may differ slightly from that supplied

- 261-MR 3/8 Distribution kit with oil gun (24572M)**
- 262-MR 3/8 with EEC-approved hose end meter (24101/D)**
- 263-MR 3/8 with commercial hose end meter (24700)**
- 264-MR 3/8 with preset hose end meter (24702)**
- 265-MR 3/8 with commercial hose end meter (24780)**

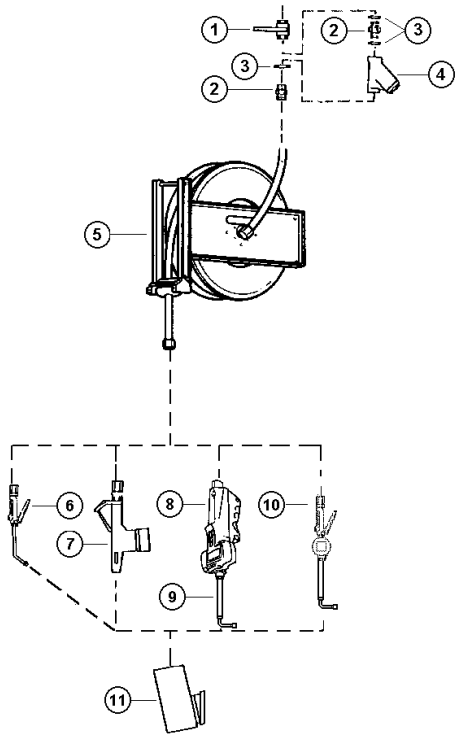


| Item | Description               | 261-MR 3/8 | 262-MR 3/8 | 263-MR 3/8 | 264-MR 3/8 | 265-MR 3/8 |
|------|---------------------------|------------|------------|------------|------------|------------|
| 1    | Shut-off valve            | 101-1/2    | 101-1/2    | 101-1/2    | 101-1/2    | 101-1/2    |
| 2    | Adapter 1/2" BSP          | 0101-8     | 0101-8     | 0101-8     | 0101-8     | 0101-8     |
| 3    | Dowty Washer              | GBR-1/2    | GBR-1/2    | GBR-1/2    | GBR-1/2    | GBR-1/2    |
| 4    | Oil Filter                | 28022      | 28022      | 28022      | 28022      | 28022      |
| 5    | Hose Reel (3/8" x 15m)    | 824905     | 824905     | 824905     | 824905     | 824905     |
| 6    | Oil gun                   | 24672M     | -          | -          | -          | -          |
| 7    | Hose end meter (approved) | -          | 24101/D    | -          | -          | -          |
| 8    | Hose end meter            | -          | -          | 24700      | -          | -          |
| 8    | Hose end meter (preset)   | -          | -          | -          | 24702      | -          |
| 9    | Meter outlet hose         | -          | -          | 28676      | 28676      | -          |
| 10   | Hose end meter            | -          | -          | -          | -          | 24780      |
| 11   | Drip Pocket               | 29020      | 29020      | 29020      | 29020      |            |
| 12   | Adapter 1/2" x 3/8" BSP   | 0101-8-6   | 0101-8-6   | 0101-8-6   | 0101-8-6   | 0101-8-6   |

**All kits with 15m x 3/8" bore cased hose reel**

The illustrated product may differ slightly from that supplied

- 261-OR Distribution kit with oil gun (24572M)**
- 262-OR with EEC-approved hose end meter (24101/D)**
- 263-OR with commercial hose end meter (24700)**
- 264-OR with preset hose end meter (24702)**
- 265-OR with commercial hose end meter (24780)**

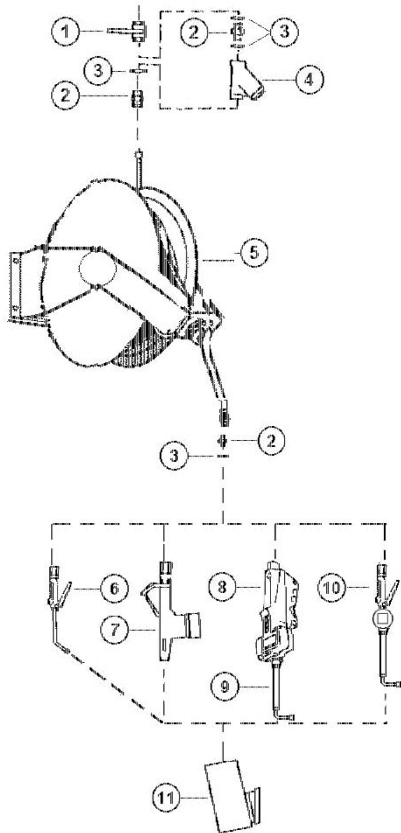


| Item | Description               | 261-OR  | 262-OR  | 263-OR  | 264-OR  | 265-OR  |
|------|---------------------------|---------|---------|---------|---------|---------|
| 1    | Shut-off valve            | 101-1/2 | 101-1/2 | 101-1/2 | 101-1/2 | 101-1/2 |
| 2    | Adapter 1/2" BSP          | 0101-8  | 0101-8  | 0101-8  | 0101-8  | 0101-8  |
| 3    | Dowty Washer              | GBR-1/2 | GBR-1/2 | GBR-1/2 | GBR-1/2 | GBR-1/2 |
| 4    | Oil Filter                | 28022   | 28022   | 28022   | 28022   | 28022   |
| 5    | Hose Reel (1/2" x 20m)    | 24920   | 24920   | 24920   | 24920   | 24920   |
| 6    | Oil gun                   | 24672M  | -       | -       | -       | -       |
| 7    | Hose end meter (approved) | -       | 24101/D | -       | -       | -       |
| 8    | Hose end meter            | -       | -       | 24700   | -       | -       |
| 8    | Hose end meter (preset)   | -       | -       | -       | 24702   | -       |
| 9    | Meter outlet hose         | -       | -       | 28676   | 28676   | -       |
| 10   | Hose end meter            | -       | -       | -       | -       | 24780   |
| 11   | Drip Pocket               | 29020   | 29020   | 29020   | 29020   | 29020   |

**All kits with 20m x 1/2" bore open hose reel**

The illustrated product may differ slightly from that supplied

- 261-ORM Distribution kit with oil gun (24572M)**
- 262-ORM with EEC-approved hose end meter (24101/D)**
- 263-ORM with commercial hose end meter (24700)**
- 264-ORM with preset hose end meter (24702)**
- 265-ORM with commercial hose end meter (24780)**

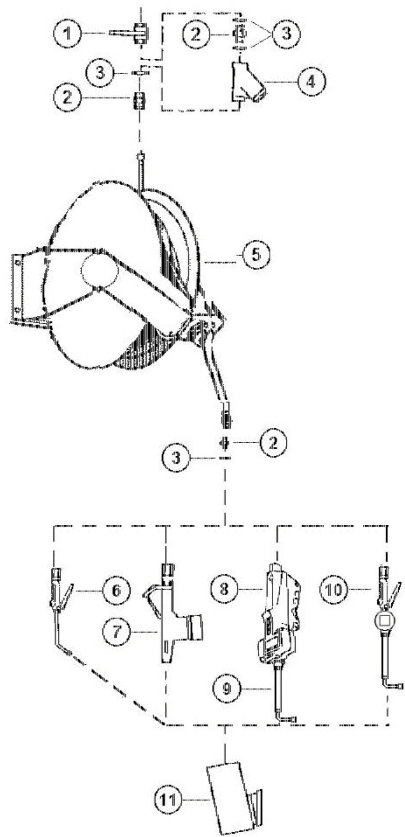


| Item | Description               | 261-ORM | 262-ORM | 263-ORM | 264-ORM | 265-ORM |
|------|---------------------------|---------|---------|---------|---------|---------|
| 1    | Shut-off valve            | 101-1/2 | 101-1/2 | 101-1/2 | 101-1/2 | 101-1/2 |
| 2    | Adapter 1/2" BSP          | 0101-8  | 0101-8  | 0101-8  | 0101-8  | 0101-8  |
| 3    | Dowty Washer              | GBR-1/2 | GBR-1/2 | GBR-1/2 | GBR-1/2 | GBR-1/2 |
| 4    | Oil Filter                | 28022   | 28022   | 28022   | 28022   | 28022   |
| 5    | Hose Reel (1/2" x 15m)    | 24922   | 24922   | 24922   | 24922   | 24922   |
| 6    | Oil gun                   | 24672M  | -       | -       | -       | -       |
| 7    | Hose end meter (approved) | -       | 24101/D | -       | -       | -       |
| 8    | Hose end meter            | -       | -       | 24700   | -       | -       |
| 8    | Hose end meter (preset)   | -       | -       | -       | 24702   | -       |
| 9    | Meter outlet hose         | -       | -       | 28676   | 28676   | -       |
| 10   | Hose end meter            | -       | -       | -       | -       | 24780   |
| 11   | Drip Pocket               | 29020   | 29020   | 29020   | 29020   | 29020   |

**All kits with 15m x 1/2" bore open hose reel**

The illustrated product may differ slightly from that supplied

- 261-ORK Distribution kit with oil gun (24572M)**
- 262-ORK with EEC-approved hose end meter (24101/D)**
- 263-ORK with commercial hose end meter (24700)**
- 264-ORK with preset hose end meter (24702)**
- 265-ORK with commercial hose end meter (24780)**

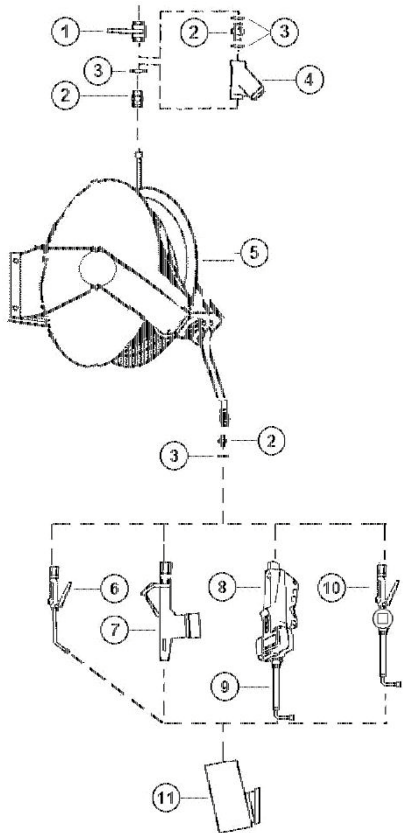


| Item | Description               | 261-ORK | 262-ORK | 263-ORK | 264-ORK | 265-ORK |
|------|---------------------------|---------|---------|---------|---------|---------|
| 1    | Shut-off valve            | 101-1/2 | 101-1/2 | 101-1/2 | 101-1/2 | 101-1/2 |
| 2    | Adapter 1/2" BSP          | 0101-8  | 0101-8  | 0101-8  | 0101-8  | 0101-8  |
| 3    | Dowty Washer              | GBR-1/2 | GBR-1/2 | GBR-1/2 | GBR-1/2 | GBR-1/2 |
| 4    | Oil Filter                | 28022   | 28022   | 28022   | 28022   | 28022   |
| 5    | Hose Reel (1/2" x 10m)    | 24911   | 24911   | 24911   | 24911   | 24911   |
| 6    | Oil gun                   | 24672M  | -       | -       | -       | -       |
| 7    | Hose end meter (approved) | -       | 24101/D | -       | -       | -       |
| 8    | Hose end meter            | -       | -       | 24700   | -       | -       |
| 8    | Hose end meter (preset)   | -       | -       | -       | 24702   | -       |
| 9    | Meter outlet hose         | -       | -       | 28676   | 28676   | -       |
| 10   | Hose end meter            | -       | -       | -       | -       | 24780   |
| 11   | Drip Pocket               | 29020   | 29020   | 29020   | 29020   | 29020   |

**All kits with 10m x 1/2" bore open hose reel**

The illustrated product may differ slightly from that supplied

- 261-ORL 1/2 Distribution kit with oil gun (24572M)**
- 262-ORL 1/2 with EEC-approved hose end meter (24101/D)**
- 263-ORL 1/2 with commercial hose end meter (24700)**
- 264-ORL 1/2 with preset hose end meter (24702)**
- 265-ORL 1/2 with commercial hose end meter (24780)**

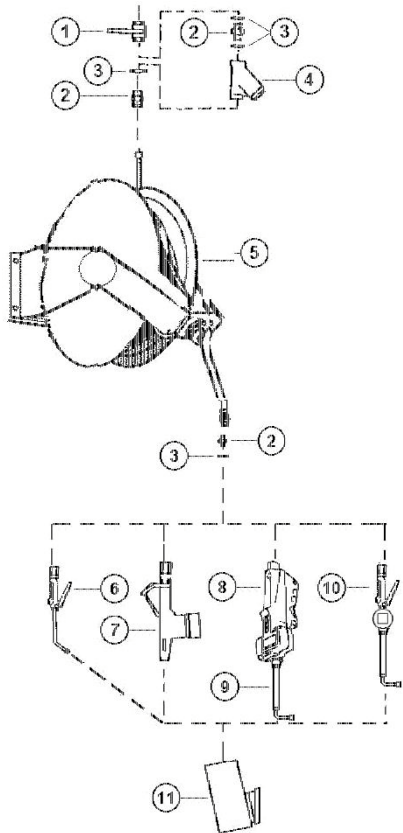


| Item | Description               | 261-ORL 1/2 | 262-ORL 1/2 | 263-ORL 1/2 | 264-ORL 1/2 | 265-ORL 1/2 |
|------|---------------------------|-------------|-------------|-------------|-------------|-------------|
| 1    | Shut-off valve            | 101-1/2     | 101-1/2     | 101-1/2     | 101-1/2     | 101-1/2     |
| 2    | Adapter 1/2" BSP          | 0101-8      | 0101-8      | 0101-8      | 0101-8      | 0101-8      |
| 3    | Dowty Washer              | GBR-1/2     | GBR-1/2     | GBR-1/2     | GBR-1/2     | GBR-1/2     |
| 4    | Oil Filter                | 28022       | 28022       | 28022       | 28022       | 28022       |
| 5    | Hose Reel (1/2" x 20m)    | 24931       | 24931       | 24931       | 24931       | 24931       |
| 6    | Oil gun                   | 24672M      | -           | -           | -           | -           |
| 7    | Hose end meter (approved) | -           | 24101/D     | -           | -           | -           |
| 8    | Hose end meter            | -           | -           | 24700       | -           | -           |
| 8    | Hose end meter (preset)   | -           | -           | -           | 24702       | -           |
| 9    | Meter outlet hose         | -           | -           | 28676       | 28676       | -           |
| 10   | Hose end meter            | -           | -           | -           | -           | 24780       |
| 11   | Drip Pocket               | 29020       | 29020       | 29020       | 29020       | 29020       |

**All kits with 20m x 1/2" bore open hose reel**

The illustrated product may differ slightly from that supplied

- 261-ORL 3/4 Distribution kit with oil gun (24563)**
- 262-ORL 3/4 with EEC-approved hose end meter (24101/D)**
- 263-ORL 3/4 with commercial hose end meter (24700)**
- 264-ORL 3/4 with preset hose end meter (24702)**
- 265-ORL 3/4 with commercial hose end meter (24780)**

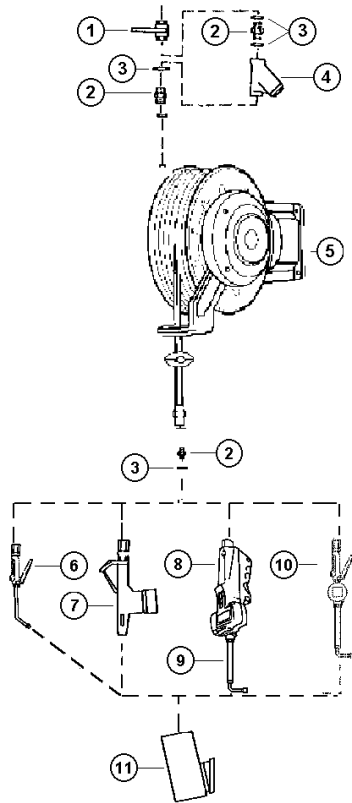


| Item | Description               | 261-ORL 3/4 | 262-ORL 3/4 | 263-ORL 3/4 | 264-ORL 3/4 | 265-ORL 3/4 |
|------|---------------------------|-------------|-------------|-------------|-------------|-------------|
| 1    | Shut-off valve            | 101-3/4     | 101-3/4     | 101-3/4     | 101-3/4     | 101-3/4     |
| 2    | Adapter 3/4" BSP          | 0101-12     | 0101-12     | 0101-12     | 0101-12     | 0101-12     |
| 3    | Dowty Washer              | GBR-3/4     | GBR-3/4     | GBR-3/4     | GBR-3/4     | GBR-3/4     |
| 4    | Oil Filter                | 28059       | 28059       | 28059       | 28059       | 28059       |
| 5    | Hose Reel (3/4" x 15m)    | 24932       | 24932       | 24932       | 24932       | 24932       |
| 6    | Oil gun                   | 24563       | -           | -           | -           | -           |
| 7    | Hose end meter (approved) | -           | 24101/D     | -           | -           | -           |
| 8    | Hose end meter            | -           | -           | 24700       | -           | -           |
| 8    | Hose end meter (preset)   | -           | -           | -           | 24702       | -           |
| 9    | Meter outlet hose         | -           | -           | 28676       | 28676       | -           |
| 10   | Hose end meter            | -           | -           | -           | -           | 24780       |
| 11   | Drip Pocket               | 29020       | 29020       | 29020       | 29020       | 29020       |

**All kits with 15m x 3/4" bore open hose reel**

The illustrated product may differ slightly from that supplied

- 261-LOR 1/2 Distribution kit with oil gun (24572M)**
- 262-LOR 1/2 with EEC-approved hose end meter (24101/D)**
- 263-LOR 1/2 with commercial hose end meter (24700)**
- 264-LOR 1/2 with preset hose end meter (24702)**
- 265-LOR 1/2 with commercial hose end meter (24780)**



| Item | Description               | 261-LOR 1/2 | 262-LOR 1/2 | 263-LOR 1/2 | 264-LOR 1/2 | 265-LOR 1/2 |
|------|---------------------------|-------------|-------------|-------------|-------------|-------------|
| 1    | Shut-off valve            | 101-1/2     | 101-1/2     | 101-1/2     | 101-1/2     | 101-1/2     |
| 2    | Adapter 1/2" BSP          | 0101-8      | 0101-8      | 0101-8      | 0101-8      | 0101-8      |
| 3    | Dowty Washer              | GBR-1/2     | GBR-1/2     | GBR-1/2     | GBR-1/2     | GBR-1/2     |
| 4    | Oil Filter                | 28022       | 28022       | 28022       | 28022       | 28022       |
| 5    | Hose Reel (1/2" x 25m)    | 24941       | 24941       | 24941       | 24941       | 24941       |
| 6    | Oil gun                   | 24672M      | -           | -           | -           | -           |
| 7    | Hose end meter (approved) | -           | 24101/D     | -           | -           | -           |
| 8    | Hose end meter            | -           | -           | 24700       | -           | -           |
| 8    | Hose end meter (preset)   | -           | -           | -           | 24702       | -           |
| 9    | Meter outlet hose         | -           | -           | 28676       | 28676       | -           |
| 10   | Hose end meter            | -           | -           | -           | -           | 24780       |
| 11   | Drip Pocket               | 29020       | 29020       | 29020       | 29020       | 29020       |

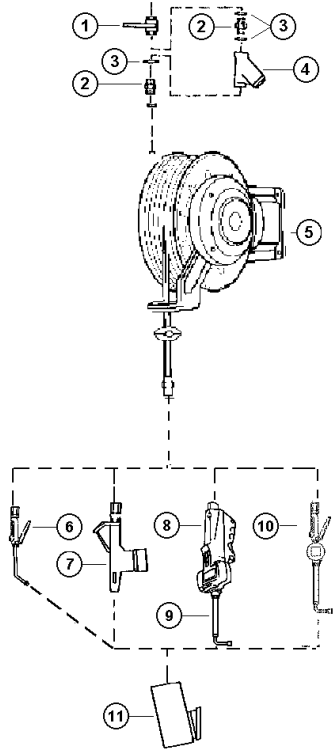
**All kits with 25m x 1/2" bore open hose reel**

The illustrated product may differ slightly from that supplied

- 261-LOR 3/4 Distribution kit with oil gun (24563)**
- 262-LOR 3/4 with EEC-approved hose end meter (24101/D)**
- 263-LOR 3/4 with commercial hose end meter (24700)**
- 264-LOR 3/4 with preset hose end meter (24702)**
- 265-LOR 3/4 with commercial hose end meter (24780)**



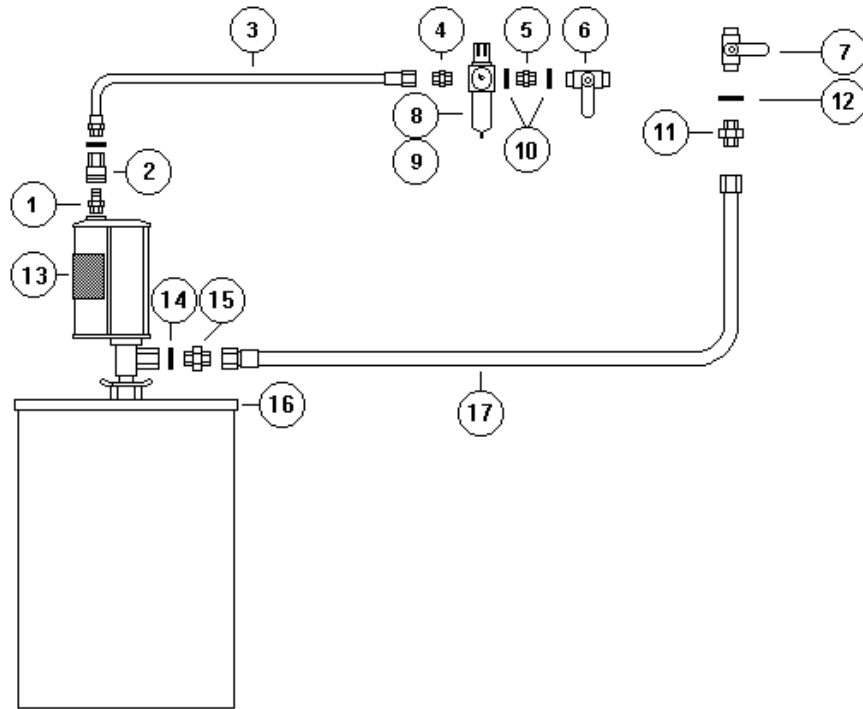
| Item | Description               | 261-LOR 3/4 | 262-LOR 3/4 | 263-LOR 3/4 | 264-LOR 3/4 | 265-LOR 3/4 |
|------|---------------------------|-------------|-------------|-------------|-------------|-------------|
| 1    | Shut-off valve            | 101-3/4     | 101-3/4     | 101-3/4     | 101-3/4     | 101-3/4     |
| 2    | Adapter 3/4" BSP          | 0101-12     | 0101-12     | 0101-12     | 0101-12     | 0101-12     |
| 3    | Dowty Washer              | GBR-3/4     | GBR-3/4     | GBR-3/4     | GBR-3/4     | GBR-3/4     |
| 4    | Oil Filter                | 28059       | 28059       | 28059       | 28059       | 28059       |
| 5    | Hose Reel (3/4" x 20m)    | 24943       | 24943       | 24943       | 24943       | 24943       |
| 6    | Oil gun                   | 24563       | -           | -           | -           | -           |
| 7    | Hose end meter (approved) | -           | 24101/D     | -           | -           | -           |
| 8    | Hose end meter            | -           | -           | 24700       | -           | -           |
| 8    | Hose end meter (preset)   | -           | -           | -           | 24702       | -           |
| 9    | Meter outlet hose         | -           | -           | 28676       | 28676       | -           |
| 10   | Hose end meter            | -           | -           | -           | -           | 24780       |
| 11   | Drip Pocket               | 29020       | 29020       | 29020       | 29020       | 29020       |



**All kits with 20m x 3/4" bore open hose reel**

The illustrated product may differ slightly from that supplied

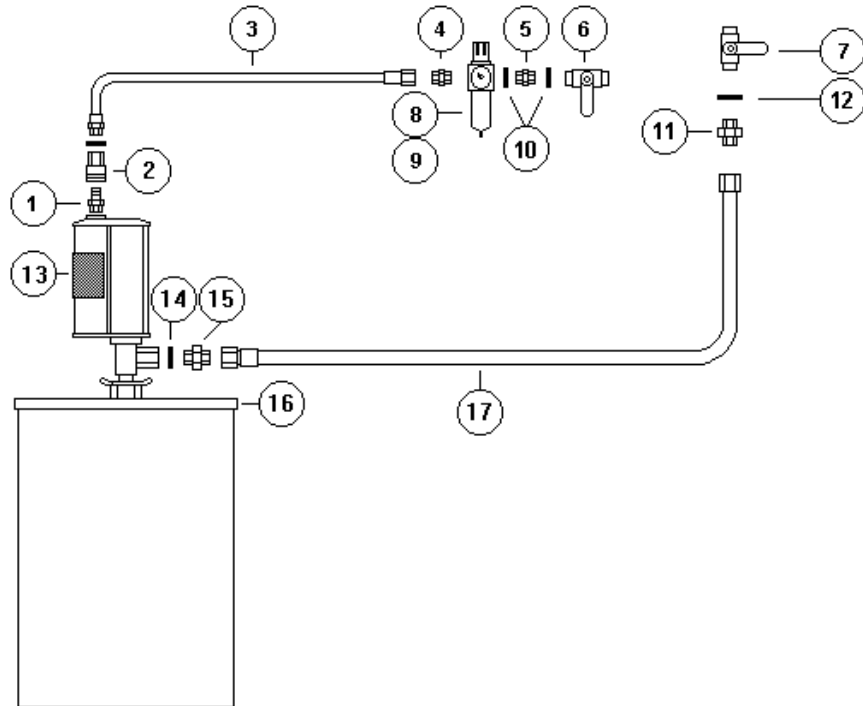
# 102 GB 75:1 Grease pump kit for 180kg keg



| Item | Part No. | Description      | Qty |
|------|----------|------------------|-----|
| 1    | 48501    | Nipple 1/4" BSP  | 1   |
| 2    | 44516    | Female Coupler   | 1   |
| 3    | 48001    | Air Line Hose    | 1   |
| 4    | 3096-4R4 | Adapter          | 1   |
| 5    | 01014    | Adapter 1/4" BSP | 1   |
| 6    | 101-1/4  | Shut Off Valve   | 1   |
| 7    | BKH-R1/2 | Shut Off Valve   | 1   |
| 8    | 42007    | Filter Regulator | 1   |
| 9    | 274Z160  | Pressure Gauge   | 1   |
| 10   | GBR-1/4  | Dowty Washer     | 3   |
| 11   | 0101-8-6 | Adapter          | 1   |
| 12   | GBR-1/2  | Dowty Washer     | 1   |
| 13   | 12557    | 75:1 Grease Pump | 1   |
| 14   | GBR-3/8  | Dowty Washer     | 1   |
| 15   | 0101-6   | Adapter 3/8" BSP | 1   |
| 16   | 18525    | Drum Cover       | 1   |
| 17   | 18107    | Grease Hose      | 1   |

The illustrated product may differ slightly from that supplied

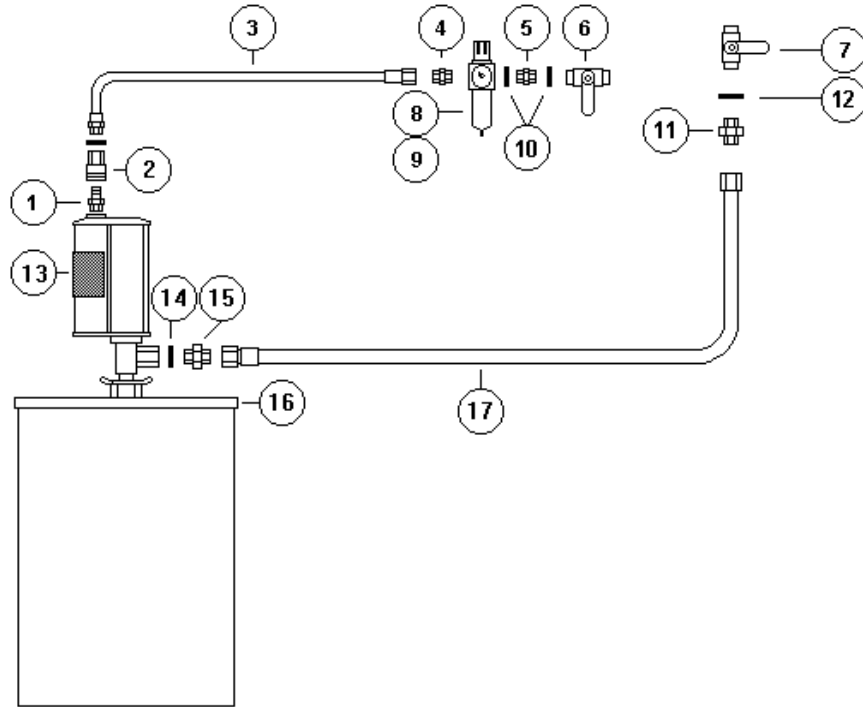
# 102 GBA 75:1 Grease pump kit for 50kg keg



| Item | Part No. | Description      | Qty |
|------|----------|------------------|-----|
| 1    | 48501    | Nipple 1/4" BSP  | 1   |
| 2    | 44516    | Female Coupler   | 1   |
| 3    | 48001    | Air Line Hose    | 1   |
| 4    | 3096-4R4 | Adapter          | 1   |
| 5    | 01014    | Adapter 1/4" BSP | 1   |
| 6    | 101-1/4  | Shut Off Valve   | 1   |
| 7    | BKH-R1/2 | Shut Off Valve   | 1   |
| 8    | 42007    | Filter Regulator | 1   |
| 9    | 274Z160  | Pressure Gauge   | 1   |
| 10   | GBR-1/4  | Dowty Washer     | 3   |
| 11   | 0101-8-6 | Adapter          | 1   |
| 12   | GBR-1/2  | Dowty Washer     | 1   |
| 13   | 12556    | 75:1 Grease Pump | 1   |
| 14   | GBR-3/8  | Dowty Washer     | 1   |
| 15   | 0101-6   | Adapter 3/8" BSP | 1   |
| 16   | 18526    | Drum Cover       | 1   |
| 17   | 18107    | Grease Hose      | 1   |

The illustrated product may differ slightly from that supplied

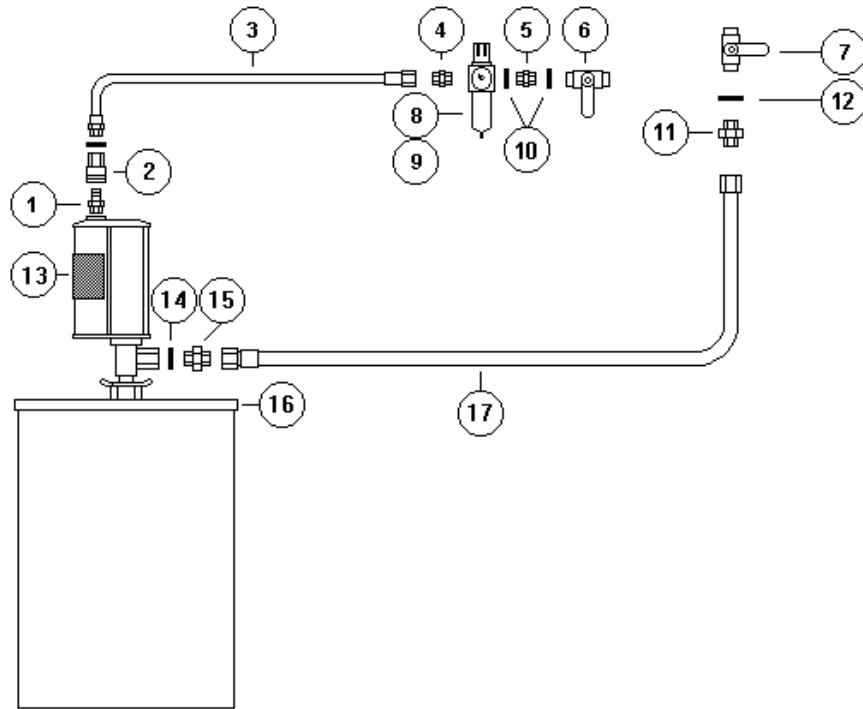
# 175 GB 55:1 Grease pump kit for 180kg keg



| Item | Part No. | Description      | Qty |
|------|----------|------------------|-----|
| 1    | 48501    | Nipple ¼" BSP    | 1   |
| 2    | 44516    | Female Coupler   | 1   |
| 3    | 48001    | Air Line Hose    | 1   |
| 4    | 3096-4R4 | Adapter          | 1   |
| 5    | 01014    | Adapter ¼" BSP   | 1   |
| 6    | 101-1/4  | Shut Off Valve   | 1   |
| 7    | BKH-R1/2 | Shut Off Valve   | 1   |
| 8    | 42007    | Filter Regulator | 1   |
| 9    | 274Z160  | Pressure Gauge   | 1   |
| 10   | GBR-1/4  | Dowty Washer     | 3   |
| 11   | 0101-8-6 | Adapter          | 1   |
| 12   | GBR-1/2  | Dowty Washer     | 1   |
| 13   | 12552    | 55:1 Grease Pump | 1   |
| 14   | GBR-3/8  | Dowty Washer     | 1   |
| 15   | 0101-6   | Adapter 3/8" BSP | 1   |
| 16   | 18525    | Drum Cover       | 1   |
| 17   | 18107    | Grease Hose      | 1   |

The illustrated product may differ slightly from that supplied

# 175 GBA 55:1 Grease pump kit for 50kg keg



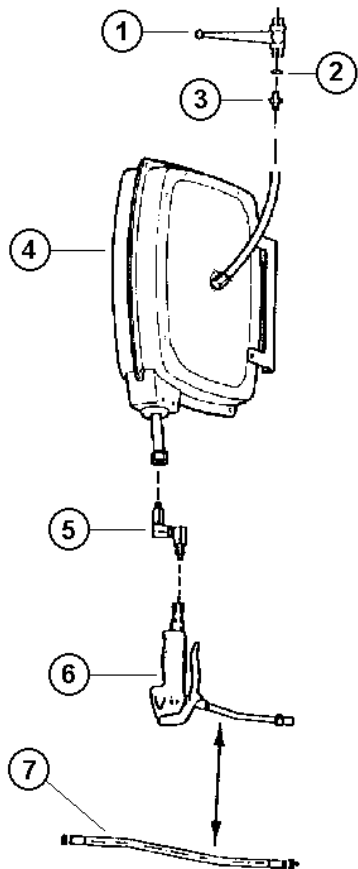
| Item | Part No. | Description      | Qty |
|------|----------|------------------|-----|
| 1    | 48501    | Nipple ¼" BSP    | 1   |
| 2    | 44516    | Female Coupler   | 1   |
| 3    | 48001    | Air Line Hose    | 1   |
| 4    | 3096-4R4 | Adapter          | 1   |
| 5    | 01014    | Adapter ¼" BSP   | 1   |
| 6    | 101-1/4  | Shut Off Valve   | 1   |
| 7    | BKH-R1/2 | Shut Off Valve   | 1   |
| 8    | 42007    | Filter Regulator | 1   |
| 9    | 274Z160  | Pressure Gauge   | 1   |
| 10   | GBR-1/4  | Dowty Washer     | 3   |
| 11   | 0101-8-6 | Adapter          | 1   |
| 12   | GBR-1/2  | Dowty Washer     | 1   |
| 13   | 12551    | 55:1 Grease Pump | 1   |
| 14   | GBR-3/8  | Dowty Washer     | 1   |
| 15   | 0101-6   | Adapter 3/8" BSP | 1   |
| 16   | 18526    | Drum Cover       | 1   |
| 17   | 18107    | Grease Hose      | 1   |

The illustrated product may differ slightly from that supplied

**118-CRM Distribution kit for grease (10m x 1/4" bore cased reel)**

**118-CRM-3/8 Distribution kit for grease (10m x 3/8" bore cased reel)**

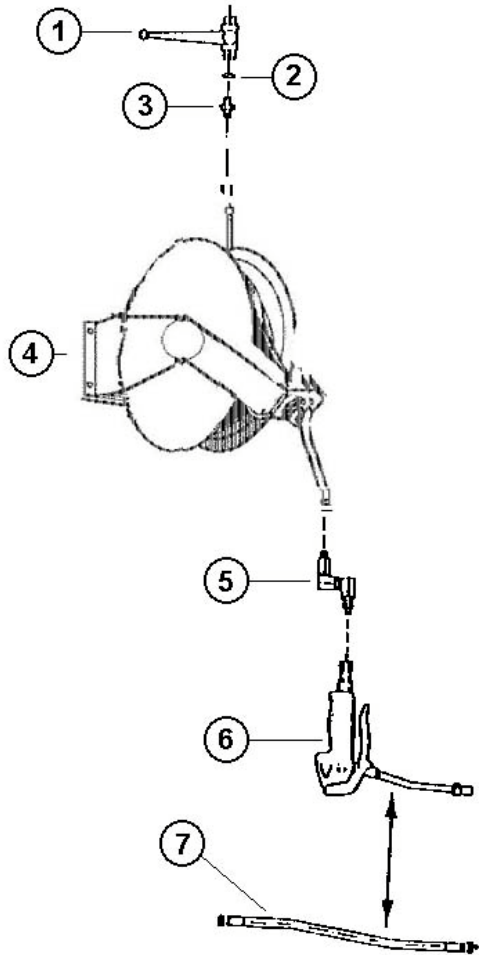
**119-CRM Distribution kit for grease (15m x 1/4" bore cased reel)**



| Item | Description           | 118-CRM  | 118-CRM-3/8 | 119-CRM  |
|------|-----------------------|----------|-------------|----------|
| 1    | Shut-off valve        | BKHR 1/4 | BKHR 1/2    | BKHR 1/4 |
| 2    | Dowty washer          | GBR-1/4  | GBR-1/2     | GBR-1/4  |
| 3    | Adapter               | 01014    | 01086       | 01014    |
| 4    | Hose reel             | 914205   | 914215      | 914210   |
| 5    | 'Z' swivel            | 18071    | 18071       | 18071    |
| 6    | Grease gun            | 14610    | 14610       | 14610    |
| 7    | Flexible hose (450mm) | 14044    | 14044       | 14044    |

The illustrated product may differ slightly from that supplied

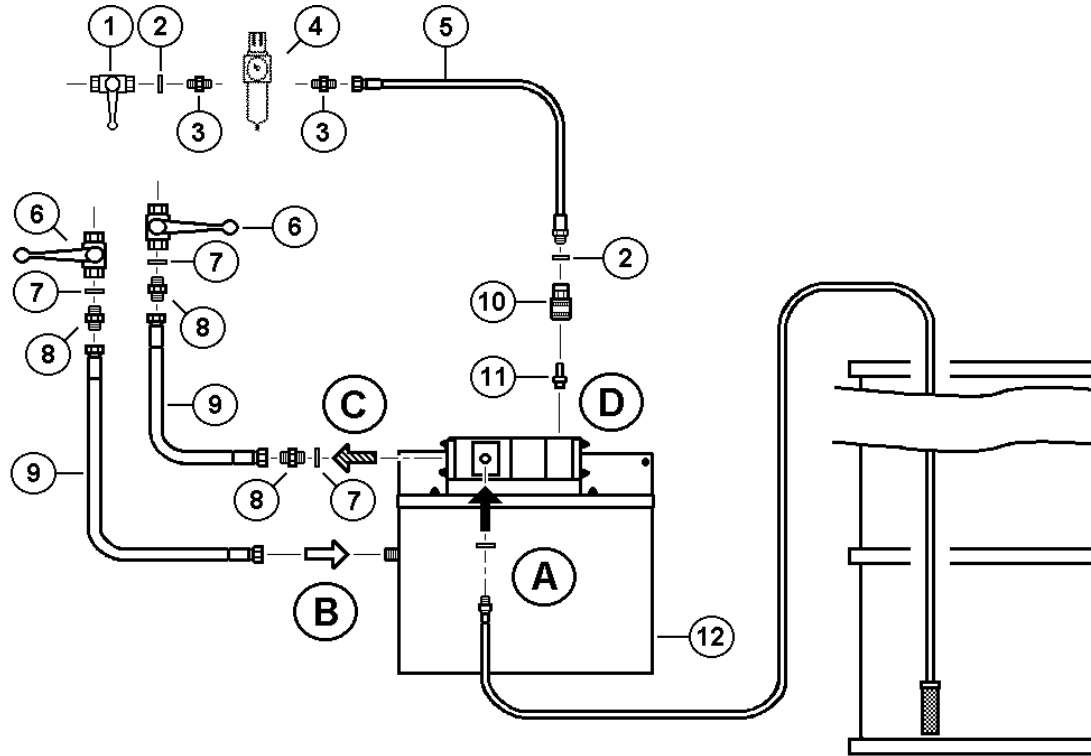
**118-ORK Distribution kit for grease (10m x 1/4" bore cased reel)**  
**119-ORM Distribution kit for grease (15m x 1/4" bore cased reel)**



| Item | Description           | 118-ORK  | 119-ORM  |
|------|-----------------------|----------|----------|
| 1    | Shut-off valve        | BKHR 1/4 | BKHR 1/4 |
| 2    | Dowty washer          | GBR-1/4  | GBR-1/4  |
| 3    | Adapter               | 01014    | 01014    |
| 4    | Hose reel             | 14206    | 14218    |
| 5    | 'Z' swivel            | 18071    | 18071    |
| 6    | Grease gun            | 14610    | 14610    |
| 7    | Flexible hose (450mm) | 14044    | 14044    |

The illustrated product may differ slightly from that supplied

# Water Glycol Mixing Units



- A** Glycol Inlet 3/8" BSP (F)
- B** Water Inlet 1/2" BSP (M)
- C** Mixture Outlet 1/2" BSP (F)
- D** Air Inlet 1/4" BSP (F)

| Item | Description               | Spec 7035 (50/50 MIX) | Spec 7036 (20/50 MIX) |
|------|---------------------------|-----------------------|-----------------------|
| 1    | Shut off valve (1/4" BSP) | 101-1/4               | 101-1/4               |
| 2    | 1/4" Dowty Washer         | GBR-1/4               | GBR-1/4               |
| 3    | Adapter 1/4" BSP (T/P)    | 3069-4R4              | 3069-4R4              |
| 4    | Filter Regulator          | 42007                 | 42007                 |
| 5    | Air Line Hose             | 48001                 | 48001                 |
| 6    | Shut off valve (1/2" BSP) | 101-1/2               | 101-1/2               |
| 7    | 1/2" Dowty Washer         | GBR-1/2               | GBR-1/2               |
| 8    | Adapter 1/2" BSP (M/M)    | 0101-8                | 0101-8                |
| 9    | Distribution Hose         | 28009                 | 28009                 |
| 10   | Air Coupler (1/4" BSP)    | 44516                 | 44516                 |
| 11   | Nipple (1/4" BSP)         | 48501                 | 48501                 |
| 12   | Mixing Unit               | 24875                 | 24885                 |

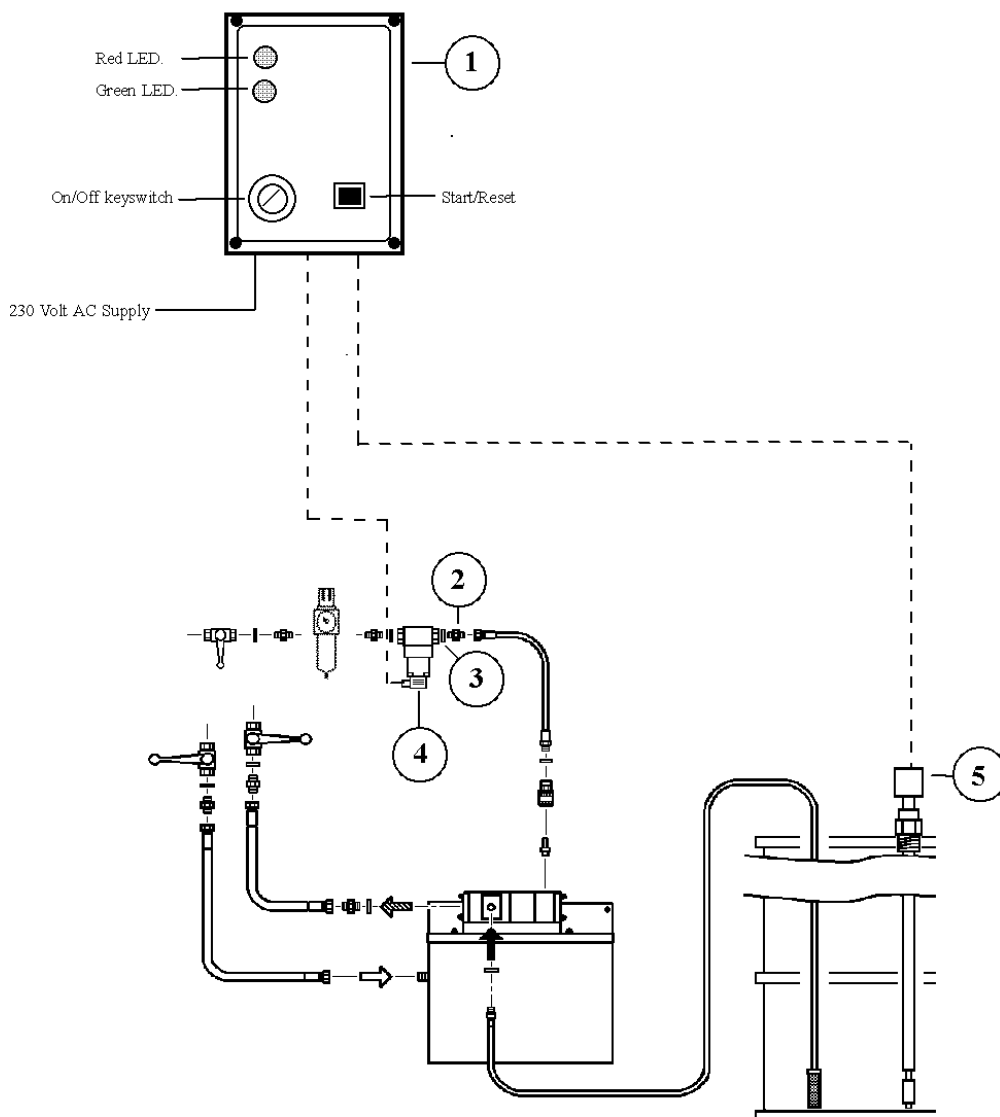
The illustrated product may differ slightly from that supplied

# Pump Protection Kit (SPEC 8020)



**LED Indication Status**

Red: - Drum empty or restart required  
 Green: - Normal run status



| Position | Description           | Quantity | Part Number |
|----------|-----------------------|----------|-------------|
| 1        | Control Panel         | 1        | 23170       |
| 2        | Adapter (1/4" BSP)    | 1        | 01014       |
| 3        | Dowty Washer          | 2        | GBR-1/4     |
| 4        | Air solenoid valve    | 1        | 48052       |
| 5        | Drum low level switch | 1        | 23171       |

The illustrated product may differ slightly from that supplied

---

## Pump Protection Kit (SPEC 8020)

---



The pump protection kit is designed for use in 205 litre drum applications, to prevent the pump from running dry, in the event of an empty drum. The kit includes a control panel (1), ¼ BSP adapter (2), two Dowty sealing washers (3), a 24 volt air solenoid valve (4) and a drum low level switch (5) for incorporating in the pump kit installation.

The pump protection kit is suitable for most Orion drum mounted pumps.

**WARNING:** the protection kit must be included in all water-glycol mixing pump installations. (part numbers 24820 and 24850 – Installation specifications, Spec 7035 and Spec 7036).

**Failure to install the pump protection kit will invalidate the equipment warranty.**

### Operation

Once the pump protection kit components have been installed and electrically connected in concordance with the diagram shown on the previous page, the unit is ready for use.

1. Turn the keyswitch to the ON position. With the auto/manual reset link in the “M” (manual) position, the red LED will illuminate
2. Press the Start/Reset button. Provided that the drum is not empty, the reset command will result in the green LED being illuminated and the air solenoid energised (normal Run status). The pump will now operate.

When the level switch detects low level in the drum, the red LED will illuminate and the air solenoid will be de-energised, preventing the pump from working.

Once the drum has been changed, repeat step 2 to reset to Run status.